

---

## AC Motors

## Siemens Motors

### AC Induction Motors (General / Industrial Duty)

#### IE2 (EFF1 Premium Efficiency) - Siemens Motors (B3)



**SIEMENSE**

- IE2 (EFF1) Motors exceeding New IEC 60034-30/ WIMES specifications
- Energy Technology List qualified
- Service factor 1.15
- Inverter ready to < 500V
- Minimum protection to IP55
- Voltages 230V Delta / 400V Star 50Hz +/-10% to 3kW inclusive
- 400V Delta / 690V Star 50Hz +/-10% > 3kW
- Aluminium & Cast Iron material designs
- Tropicalised to 100% relative humidity as standard
- Removeable and re-positionable feet on popular frame sizes (multi-mount)
- Excellent performance and reliability
- Lower lifetime running costs
- Reduced maintenance
- Class F insulation with class B temperature rise
- Top mount terminal box with metric type knockouts
- Low noise level
- Slot keyway with key

#### IE2 (EFF1) - AC Three Phase - 2 Pole 3000 rpm - Foot Mounted (B3)



Price Each

Order Code	kW	Nominal RPM	Frame Size	Mount	Material	1+
WXJ0001	0.18	3000	63	B3	Aluminium	£84.65
WXJ0002	0.25	3000	63	B3	Aluminium	£89.63
WXJ0003	0.37	3000	71	B3	Aluminium	£90.68
WXJ0004	0.55	3000	71	B3	Aluminium	£102.47
WXJ0005	0.75	3000	80	B3	Aluminium	£112.69
WXJ0006	1.1	3000	80	B3	Aluminium	£128.95
WXJ0007	1.5	3000	90S	B3	Aluminium	£148.86
WXJ0008	2.2	3000	90L	B3	Aluminium	£191.84
WXJ0009	3	3000	100L	B3	Aluminium	£230.37
WXJ0010	4	3000	112M	B3	Aluminium	£272.56
WXJ0011	5.5	3000	132S	B3	Aluminium	£343.33
WXJ0012	7.5	3000	132S	B3	Aluminium	£435.05
WXJ0013	11	3000	160M	B3	Aluminium	£602.78
WXJ0014	15	3000	160M	B3	Aluminium	£786.24
WXJ0015	18.5	3000	160L	B3	Aluminium	£938.24
WXJ0016	22	3000	180M	B3	Cast Iron	£1207.99
WXJ0017	30	3000	200L	B3	Cast Iron	£1566.43
WXJ0018	37	3000	200L	B3	Cast Iron	£1967.21
WXJ0019	45	3000	225M	B3	Cast Iron	£2348.24
WXJ0020	55	3000	250M	B3	Cast Iron	£2788.53
WXJ0021 ‡	75	3000	280S	B3	Cast Iron	POA
WXJ0022 ‡	90	3000	280M	B3	Cast Iron	POA
WXJ0023 ‡	110	3000	315S	B3	Cast Iron	POA
WXJ0024 ‡	132	3000	315S	B3	Cast Iron	POA
WXJ0025 ‡	160	3000	315L	B3	Cast Iron	POA
WXJ0026 ‡	200	3000	315L	B3	Cast Iron	POA

‡ Special delivery applies. Please call for details

#### IE2 (EFF1) - AC Three Phase - 4 Pole 1500 rpm - Foot Mounted (B3)



Price Each

Order Code	kW	Nominal RPM	Frame	Mount	Material	1+
WXJ0027	0.18	1500	63	B3	Aluminium	£93.30
WXJ0028	0.25	1500	71	B3	Aluminium	£92.78
WXJ0029	0.37	1500	71	B3	Aluminium	£103.78
WXJ0030	0.55	1500	80	B3	Aluminium	£111.91
WXJ0031	0.75	1500	80	B3	Aluminium	£122.13
WXJ0032	1.1	1500	90S	B3	Aluminium	£144.41
WXJ0033	1.5	1500	90L	B3	Aluminium	£171.40
WXJ0034	2.2	1500	100L	B3	Aluminium	£209.93
WXJ0035	3	1500	100L	B3	Aluminium	£241.64
WXJ0036	4	1500	112M	B3	Aluminium	£296.15
WXJ0037	5.5	1500	132S	B3	Aluminium	£369.53
WXJ0038	7.5	1500	132M	B3	Aluminium	£469.12
WXJ0039	11	1500	160M	B3	Aluminium	£615.89
WXJ0040	15	1500	160L	B3	Aluminium	£799.34
WXJ0041	18.5	1500	180M	B3	Cast Iron	£1024.53
WXJ0042	22	1500	180L	B3	Cast Iron	£1191.05
WXJ0043	30	1500	200L	B3	Cast Iron	£1543.85
WXJ0044	37	1500	225S	B3	Cast Iron	£1862.48
WXJ0045	45	1500	225M	B3	Cast Iron	£2209.94
WXJ0046	55	1500	250M	B3	Cast Iron	£2681.28
WXJ0047	75	1500	280S	B3	Cast Iron	POA
WXJ0048	90	1500	280M	B3	Cast Iron	POA
WXJ0049	110	1500	315S	B3	Cast Iron	POA
WXJ0050	132	1500	315M	B3	Cast Iron	POA
WXJ0051	160	1500	315L	B3	Cast Iron	POA
WXJ0052	200	1500	315L	B3	Cast Iron	POA

‡ Special delivery applies. Please call for details

#### IE2 (EFF1) - AC Three Phase - 6 Pole 1000 rpm - Foot Mounted (B3)

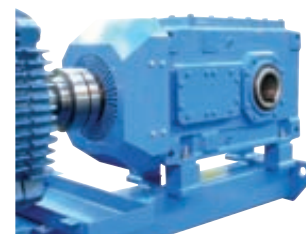


Price Each

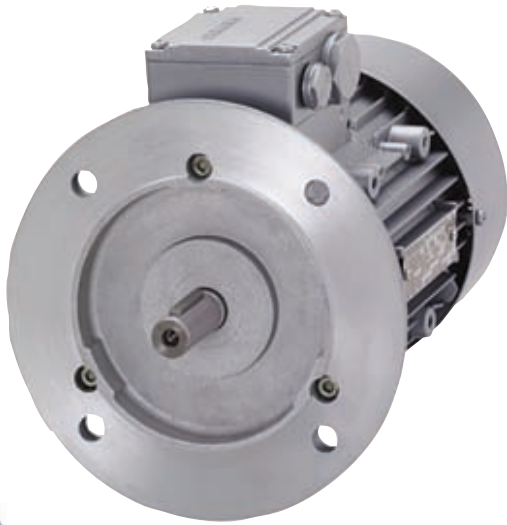
Order Code	kW	Nomial RPM	Frame	Mount	Material	1+
WXJ0053	0.75	1000	90S	B3	Aluminium	£175.33
WXJ0054	1.1	1000	90L	B3	Aluminium	£175.33
WXJ0055	1.5	1000	100L	B3	Aluminium	£207.57
WXJ0056	2.2	1000	112M	B3	Aluminium	£259.99
WXJ0057	4	1000	132M	B3	Aluminium	£406.22
WXJ0058	5.5	1000	132M	B3	Aluminium	£511.06
WXJ0059	7.5	1000	160M	B3	Aluminium	£647.34
WXJ0060	11	1000	160L	B3	Aluminium	£893.69
WXJ0061 ‡	15	1000	180L	B3	Cast Iron	£933.01
WXJ0062 ‡	18.5	1000	200L	B3	Cast Iron	£1555.14
WXJ0063 ‡	22	1000	200L	B3	Cast Iron	£1800.69
WXJ0064 ‡	30	1000	225M	B3	Cast Iron	£2415.97

‡ Special delivery applies. Please call for details

**Check out our Flender  
Range of  
Gearboxes**



IE2 (EFF1 Premium Efficiency) - Siemens Motors (B5)



SIEMENS

11 AC Motors

- IE2 (EFF1) Motors exceeding New IEC 60034-30/ WIMES specifications
- Energy Technology List qualified
- Service factor 1.15
- Inverter ready to < 500V
- Minimum protection to IP55
- Voltages 230V Delta / 400V Star 50Hz +/-10% to 3kW inclusive
- 400V Delta / 690V Star 50Hz +/-10% > 3kW
- Aluminium & Cast Iron material designs
- Tropicalised to 100% relative humidity as standard
- Removeable and re-positionable feet on popular frame sizes (multi-mount)
- Excellent performance and reliability
- Lower lifetime running costs
- Reduced maintenance
- Class F insulation with class B temperature rise
- Top mount terminal box with metric type knockouts
- Low noise level
- Slot Keyway with key

IE2 (EFF1) - AC Three Phase - 2 Pole 3000 rpm - Flange Mounted (B5)

Order Code	kW	Nominal RPM	Frame	Mount	Material	Price Each	1+
WXJ0065	0.18	3000	63	B5	Aluminium	£94.69	
WXJ0066	0.25	3000	63	B5	Aluminium	£99.67	
WXJ0067	0.37	3000	71	B5	Aluminium	£101.81	
WXJ0068	0.55	3000	71	B5	Aluminium	£113.61	
WXJ0069	0.75	3000	80	B5	Aluminium	£125.32	
WXJ0070	1.1	3000	80	B5	Aluminium	£141.58	
WXJ0071	1.5	3000	90S	B5	Aluminium	£164.03	
WXJ0072	2.2	3000	90L	B5	Aluminium	£207.02	
WXJ0073	3	3000	100L	B5	Aluminium	£249.16	
WXJ0074	4	3000	112M	B5	Aluminium	£295.89	
WXJ0075	5.5	3000	132S	B5	Aluminium	£373.73	
WXJ0076	7.5	3000	132S	B5	Aluminium	£465.46	
WXJ0077	11	3000	160M	B5	Aluminium	£642.10	
WXJ0078	15	3000	160M	B5	Aluminium	£825.55	
WXJ0079	18.5	3000	160L	B5	Aluminium	£977.56	
WXJ0080	22	3000	180M	B5	Cast Iron	£1274.88	
WXJ0081	30	3000	200L	B5	Cast Iron	£1647.72	
WXJ0082	37	3000	200L	B5	Cast Iron	£2048.50	
WXJ0083	45	3000	225M	B5	Cast Iron	£2453.23	
WXJ0084	55	3000	250M	B5	Cast Iron	£2914.69	
WXJ0085 ‡	75	3000	280S	B5	Cast Iron	POA	
WXJ0086 ‡	90	3000	280M	B5	Cast Iron	POA	
WXJ0087 ‡	110	3000	315S	B5	Cast Iron	POA	
WXJ0088 ‡	132	3000	315S	B5	Cast Iron	POA	
WXJ0089 ‡	160	3000	315L	B5	Cast Iron	POA	

‡ Special delivery applies. Please call for details

IE2 (EFF1) - AC Three Phase - 4 Pole 1500 rpm - Flange Mounted (B5)



Order Code	Kw	Nominal RPM	Frame	Mount	Material	Price Each	1+
WXJ0090	0.18	1500	63	B5	Aluminium	£103.34	
WXJ0091	0.25	1500	71	B5	Aluminium	£103.91	
WXJ0092	0.37	1500	71	B5	Aluminium	£114.92	
WXJ0093	0.55	1500	80	B5	Aluminium	£124.54	
WXJ0094	0.75	1500	80	B5	Aluminium	£134.88	
WXJ0095	1.1	1500	90S	B5	Aluminium	£159.58	
WXJ0096	1.5	1500	90L	B5	Aluminium	£186.58	
WXJ0097	2.2	1500	100L	B5	Aluminium	£228.72	
WXJ0098	3	1500	100L	B5	Aluminium	£260.43	
WXJ0099	4	1500	112M	B5	Aluminium	£319.48	
WXJ0100	5.5	1500	132S	B5	Aluminium	£399.94	
WXJ0101	7.5	1500	132M	B5	Aluminium	£499.52	
WXJ0102	11	1500	160M	B5	Aluminium	£655.20	
WXJ0103	15	1500	160L	B5	Aluminium	£838.66	
WXJ0104	18.5	1500	180M	B5	Cast Iron	£1091.42	
WXJ0105	22	1500	180L	B5	Cast Iron	£1257.94	
WXJ0106	30	1500	200L	B5	Cast Iron	£1625.14	
WXJ0107	37	1500	225S	B5	Cast Iron	£1981.89	
WXJ0108	45	1500	225M	B5	Cast Iron	£2314.93	
WXJ0109	55	1500	250M	B5	Cast Iron	£2807.44	
WXJ0110	75	1500	280S	B5	Cast Iron	POA	
WXJ0111 ‡	90	1500	280M	B5	Cast Iron	POA	
WXJ0112 ‡	110	1500	315S	B5	Cast Iron	POA	
WXJ0113 ‡	132	1500	315M	B5	Cast Iron	POA	
WXJ0114 ‡	160	1500	315L	B5	Cast Iron	POA	

‡ Special delivery applies. Please call for details

IE2 (EFF1) - AC Three Phase - 6 Pole 1000 rpm - Flange Mounted (B5)



Order Code	kW	Nominal RPM	Frame	Mount	Material	Price Each	1+
WXJ0115	0.75	1000	90S	B5	Aluminium	£156.96	
WXJ0116	1.1	1000	90L	B5	Aluminium	£190.51	
WXJ0117	1.5	1000	100L	B5	Aluminium	£226.36	
WXJ0118	2.2	1000	112M	B5	Aluminium	£283.31	
WXJ0119	4	1000	132M	B5	Aluminium	£436.63	
WXJ0120	5.5	1000	132M	B5	Aluminium	£541.46	
WXJ0121	7.5	1000	160M	B5	Aluminium	£686.65	
WXJ0122	11	1000	160L	B5	Aluminium	£933.01	
WXJ0123 ‡	15	1000	180L	B5	Cast Iron	£1336.97	
WXJ0124 ‡	18.5	1000	200L	B5	Cast Iron	£1618.03	
WXJ0125 ‡	22	1000	200L	B5	Cast Iron	£1881.98	
WXJ0126 ‡	30	1000	225M	B5	Cast Iron	£2520.97	

‡ Special delivery applies. Please call for details

Check out our range of  
Gear Couplings  
on Page 205



## ATEX - Hazardous Duty

### Flameproof EExde IIC T4 (ATEX) - Siemens Motors (B3)



## SIEMENS

- ATEX 94/9/EC approved range of hazardous area motors
- High efficiency motors
- Cast Iron construction
- IIC Hydrogen capable as standard
- Minimum protection to IP55
- Voltages 230V Delta / 400V Star 50Hz +/-10% to 3kW inclusive
- 400V Delta / 690V Star 50Hz +/-10% > 3kW
- Inverter ready to < 500V with blanket certificate to ATEX
- Tropicalised to 100% relative humidity as standard
- Excellent performance and reliability
- Lower lifetime running costs
- Reduced maintenance
- Class F insulation with class B temperature rise
- Top mount terminal box with metric type knockouts
- Low noise level
- Slot Keyway with key
- Other ATEX options available i.e. EExn, EExe

### AC Three Phase - 2 Pole 3000 rpm - Foot Mounted (B3)

Order Code	kW	Nominal RPM	Frame	Mount	Material	Price Each	1+
WXJ0261	0.37	3000	71	B3	Cast Iron	£342.38	
WXJ0262	0.55	3000	71	B3	Cast Iron	£353.00	
WXJ0263	0.75	3000	80	B3	Cast Iron	£349.57	
WXJ0264	1.1	3000	80	B3	Cast Iron	£375.65	
WXJ0265	1.5	3000	90S	B3	Cast Iron	£400.98	
WXJ0266	2.2	3000	90L	B3	Cast Iron	£459.25	
WXJ0267	3	3000	100L	B3	Cast Iron	£572.34	
WXJ0268 ‡	4	3000	112M	B3	Cast Iron	£685.00	
WXJ0269 ‡	5.5	3000	132S	B3	Cast Iron	£819.10	
WXJ0270 ‡	7.5	3000	132S	B3	Cast Iron	£935.63	
WXJ0271 ‡	11	3000	160M	B3	Cast Iron	£1274.92	
WXJ0272 ‡	15	3000	160M	B3	Cast Iron	£1552.52	
WXJ0273 ‡	18.5	3000	160L	B3	Cast Iron	POA	
WXJ0274 ‡	22	3000	180M	B3	Cast Iron	POA	
WXJ0275 ‡	30	3000	200L	B3	Cast Iron	POA	
WXJ0276 ‡	37	3000	200L	B3	Cast Iron	POA	
WXJ0277 ‡	45	3000	225M	B3	Cast Iron	POA	
WXJ0278 ‡	55	3000	250M	B3	Cast Iron	POA	
WXJ0279 ‡	75	3000	280S	B3	Cast Iron	POA	

‡ Special delivery applies. Please call for details

### AC Three Phase - 4 Pole 1500 rpm - Foot Mounted (B3)

Order Code	kW	Nominal RPM	Frame	Mount	Material	Price Each	1+
WXJ0280	0.25	1500	71	B3	Cast Iron	£338.26	
WXJ0281	0.37	1500	71	B3	Cast Iron	£349.57	
WXJ0282	0.55	1500	80	B3	Cast Iron	£346.15	
WXJ0283	0.75	1500	80	B3	Cast Iron	£356.43	
WXJ0284	1.1	1500	90S	B3	Cast Iron	£397.55	
WXJ0285	1.5	1500	90L	B3	Cast Iron	£428.40	
WXJ0286	2.2	1500	100L	B3	Cast Iron	£507.23	
WXJ0287	3	1500	100L	B3	Cast Iron	£579.20	
WXJ0288 ‡	4	1500	112M	B3	Cast Iron	£675.16	
WXJ0289 ‡	5.5	1500	132S	B3	Cast Iron	£839.66	
WXJ0290 ‡	7.5	1500	132M	B3	Cast Iron	£1638.83	
WXJ0291 ‡	11	1500	160M	B3	Cast Iron	£1278.35	
WXJ0292 ‡	15	1500	160L	B3	Cast Iron	£1600.50	
WXJ0293 ‡	18.5	1500	180M	B3	Cast Iron	POA	
WXJ0294 ‡	22	1500	180L	B3	Cast Iron	POA	
WXJ0295 ‡	30	1500	200L	B3	Cast Iron	POA	
WXJ0296 ‡	37	1500	225S	B3	Cast Iron	POA	
WXJ0297 ‡	45	1500	225M	B3	Cast Iron	POA	
WXJ0298 ‡	55	1500	250M	B3	Cast Iron	POA	
WXJ0299 ‡	75	1500	280S	B3	Cast Iron	POA	

‡ Special delivery applies. Please call for details

### AC Three Phase - 6 Pole 1000 rpm - Foot Mounted (B3)

Order Code	kW	Nominal RPM	Frame	Mount	Material	Price Each	1+
WXJ0300 ‡	0.75	1000	90S	B3	Cast Iron	POA	
WXJ0301 ‡	1.1	1000	90L	B3	Cast Iron	POA	
WXJ0302 ‡	1.5	1000	100L	B3	Cast Iron	POA	
WXJ0303 ‡	2.2	1000	112M	B3	Cast Iron	POA	
WXJ0304 ‡	3	1000	132S	B3	Cast Iron	POA	
WXJ0305 ‡	4	1000	132M	B3	Cast Iron	POA	
WXJ0306 ‡	5.5	1000	132M	B3	Cast Iron	POA	
WXJ0307 ‡	7.5	1000	160M	B3	Cast Iron	POA	
WXJ0308 ‡	11	1000	160L	B3	Cast Iron	POA	
WXJ0309 ‡	15	1000	180L	B3	Cast Iron	POA	
WXJ0310 ‡	18.5	1000	200L	B3	Cast Iron	POA	
WXJ0311 ‡	22	1000	200L	B3	Cast Iron	POA	
WXJ0312 ‡	30	1000	225M	B3	Cast Iron	POA	

‡ Special delivery applies. Please call for details

**Do You Require A  
Motor Slide Base?  
See Page 254**



Flameproof EExde IIC T4 (ATEX) - Siemens Motors (B5)



**SIEMENS**

11  
AC Motors

- ATEX 94/9/EC approved range of hazardous area motors
- High efficiency motors
- Cast Iron construction
- IIC Hydrogen capable as standard
- Minimum protection to IP55
- Voltages 230V Delta / 400V Star 50Hz +/-10% to 3kW inclusive
- 400V Delta / 690V Star 50Hz +/-10% > 3kW
- Inverter ready to < 500V with blanket certificate to ATEX
- Tropicalised to 100% relative humidity as standard
- Excellent performance and reliability
- Lower lifetime running costs
- Reduced maintenance
- Class F insulation with class B temperature rise
- Top mount terminal box with metric type knockouts
- Low noise level
- Slot Keyway with key
- Other ATEX options available i.e. EExn, EExe

AC Three Phase - 2 Pole 3000 rpm - Flange Mounted (B5)

							Price Each
Order Code	kW	Nominal RPM	Frame	Mount	Material	1+	
WXJ0313	0.37	3000	71	B5	Cast Iron	£365.38	
WXJ0314	0.55	3000	71	B5	Cast Iron	£376.00	
WXJ0315	0.75	3000	80	B5	Cast Iron	£375.72	
WXJ0316	1.1	3000	80	B5	Cast Iron	£403.14	
WXJ0317	1.5	3000	90S	B5	Cast Iron	£431.24	
WXJ0318	2.2	3000	90L	B5	Cast Iron	£506.75	
WXJ0319	3	3000	100L	B5	Cast Iron	£609.35	
WXJ0320 ‡	4	3000	112M	B5	Cast Iron	£714.57	
WXJ0321 ‡	5.5	3000	132S	B5	Cast Iron	£882.16	
WXJ0322 ‡	7.5	3000	132S	B5	Cast Iron	£998.69	
WXJ0323 ‡	11	3000	160M	B5	Cast Iron	£1359.23	
WXJ0324 ‡	15	3000	160M	B5	Cast Iron	£1636.83	
WXJ0325 ‡	18.5	3000	160L	B5	Cast Iron	POA	
WXJ0326 ‡	22	3000	180M	B5	Cast Iron	POA	
WXJ0327 ‡	30	3000	200L	B5	Cast Iron	POA	
WXJ0328 ‡	37	3000	200L	B5	Cast Iron	POA	
WXJ0329 ‡	45	3000	225M	B5	Cast Iron	POA	
WXJ0330 ‡	55	3000	250M	B5	Cast Iron	POA	
WXJ0331 ‡	75	3000	280S	B5	Cast Iron	POA	

‡ Special delivery applies. Please call for details

AC Three Phase - 4 Pole 1500 rpm - Flange Mounted (B5)

							Price Each
Order Code	kW	Nominal RPM	Frame	Mount	Material	1+	
WXJ0332	0.25	1500	71	B5	Cast Iron	£361.26	
WXJ0333	0.37	1500	71	B5	Cast Iron	£372.57	
WXJ0334	0.55	1500	80	B5	Cast Iron	£435.49	
WXJ0335	0.75	1500	80	B5	Cast Iron	£382.58	
WXJ0336	1.1	1500	90S	B5	Cast Iron	£427.82	
WXJ0337	1.5	1500	90L	B5	Cast Iron	£637.40	
WXJ0338	2.2	1500	100L	B5	Cast Iron	£544.24	
WXJ0339	3	1500	100L	B5	Cast Iron	£616.21	
WXJ0340	4	1500	112M	B5	Cast Iron	£721.43	
WXJ0341	5.5	1500	132S	B5	Cast Iron	£902.72	
WXJ0342	7.5	1500	132M	B5	Cast Iron	£1761.74	
WXJ0343	11	1500	160M	B5	Cast Iron	£1362.65	
WXJ0344	15	1500	160L	B5	Cast Iron	£1684.81	
WXJ0345	18.5	1500	180M	B5	Cast Iron	POA	
WXJ0346	22	1500	180L	B5	Cast Iron	POA	
WXJ0347	30	1500	200L	B5	Cast Iron	POA	
WXJ0348	37	1500	225S	B5	Cast Iron	POA	
WXJ0349	45	1500	225M	B5	Cast Iron	POA	
WXJ0350	55	1500	250M	B5	Cast Iron	POA	
WXJ0351	75	1500	280S	B5	Cast Iron	POA	

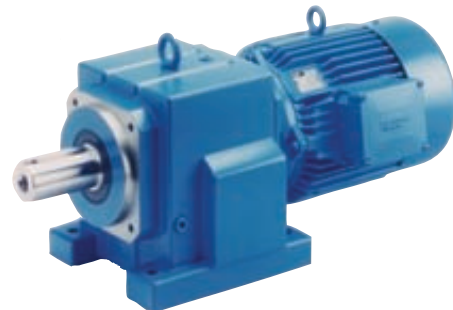
‡ Special delivery applies. Please call for details

AC Three Phase - 6 Pole 1000 rpm - Flange Mounted (B5)

							Price Each
Order Code	kW	Nominal RPM	Frame	Mount	Material	1+	
WXJ0352 ‡	0.75	1000	90S	B5	Cast Iron	POA	
WXJ0353 ‡	1.1	1000	90L	B5	Cast Iron	POA	
WXJ0354 ‡	1.5	1000	100L	B5	Cast Iron	POA	
WXJ0355 ‡	2.2	1000	112M	B5	Cast Iron	POA	
WXJ0356 ‡	3	1000	132S	B5	Cast Iron	POA	
WXJ0357 ‡	4	1000	132M	B5	Cast Iron	POA	
WXJ0358 ‡	5.5	1000	132M	B5	Cast Iron	POA	
WXJ0359 ‡	7.5	1000	160M	B5	Cast Iron	POA	
WXJ0360 ‡	11	1000	160L	B5	Cast Iron	POA	
WXJ0361 ‡	15	1000	180L	B5	Cast Iron	POA	
WXJ0362 ‡	18.5	1000	200L	B5	Cast Iron	POA	
WXJ0363 ‡	22	1000	200L	B5	Cast Iron	POA	
WXJ0364 ‡	30	1000	225M	B5	Cast Iron	POA	

‡ Special delivery applies. Please call for details

**See our Geared  
Motor Section**



# Energy Solutions for Industry and Commerce



## The Drive Train

Power supply

Machine



Electric motors  
control systems  
inverters

Geared motors

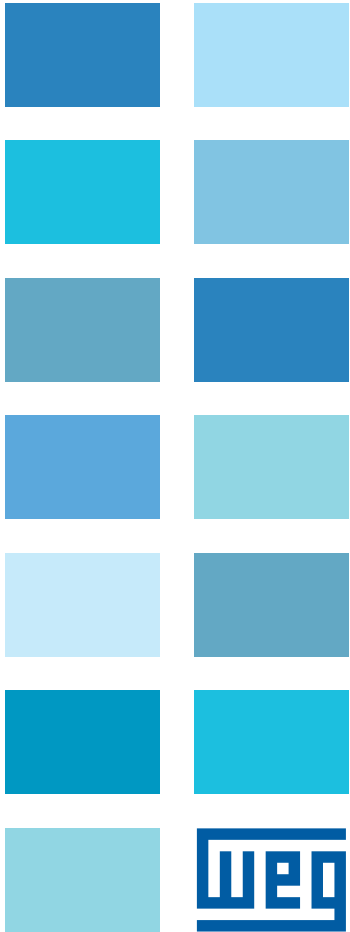
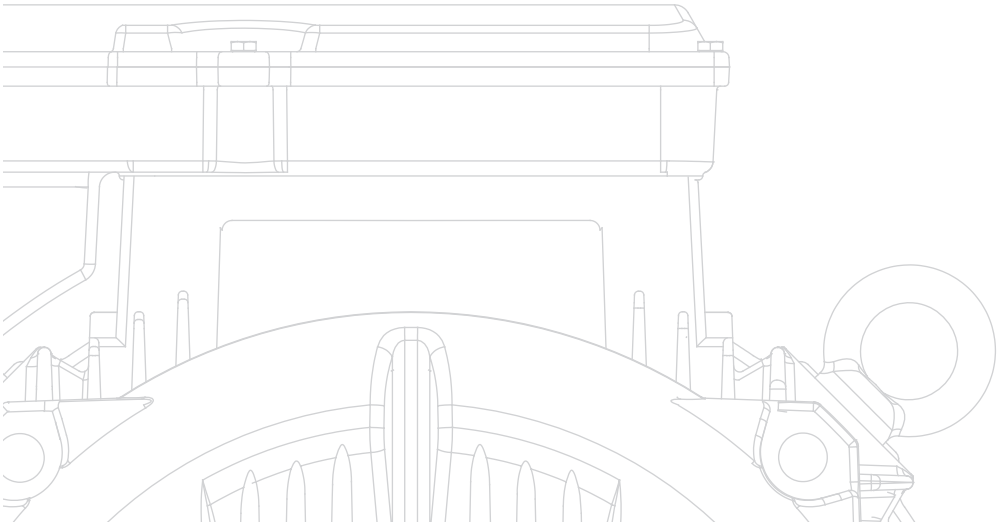
Couplings

Gear units:  
Helical, Worm,  
Bevel, Planetary

# W22

## Three Phase Motor

- Energy saving
- Increased productivity
- Extended lifetime
- Lower maintenance



AC Induction Motors (General / Industrial Duty)

IE2 (EFF1 Premium Efficiency) - WEG Motors (B3) Cast Iron



- IE2 (EFF1 Motors) meeting / exceeding New IEC 60034-30 / WIMES specifications
- Registered on the Energy Technology List
- Inverter ready for voltages <= 460V
- IP55 protection as standard (up to IP66 on request)
- Voltages 230V Delta / 400V Star (460V) +/-10%, 50(60)Hz for frame sizes <= 100
- 400V Delta (460V) / 690V Star +/-10%, 50(60)Hz for frame sizes 112 and above
- Material Cast Iron, also available in Aluminium up to frame132 on request
- Removeable and re-positionable feet on aluminium design (Multi-Mount)
- Top mounted terminal box as standard with metric cable entries
- Interchangeable with IEC metric motors
- Class F insulation with class B temperature rise
- Thermistors and 110/220V anti-condensation heaters as standard for frame sizes 132 and above
- Epoxy paint finish as standard
- Robust construction featuring metal covers and stainless steel nameplates
- Excellent performance and reliability
- Reduced energy consumption / lower running costs

IE2 (EFF1) - AC Three Phase - 2 Pole 3000 rpm - Foot Mounted (B3) Cast Iron



Price Each

Order Code	kW	Nominal RPM	Frame	Mount	Material	1+
WXJ0365	0.12	3000	63	B3	Cast Iron	£71.44
WXJ0366	0.18	3000	63	B3	Cast Iron	£74.18
WXJ0367	0.25	3000	63	B3	Cast Iron	£78.99
WXJ0368	0.37	3000	71	B3	Cast Iron	£93.00
WXJ0369	0.55	3000	71	B3	Cast Iron	£96.60
WXJ0370	0.75	3000	80	B3	Cast Iron	£125.40
WXJ0371	1.1	3000	80	B3	Cast Iron	£132.60
WXJ0372	1.5	3000	90S	B3	Cast Iron	£148.20
WXJ0373	2.2	3000	90L	B3	Cast Iron	£182.40
WXJ0374	3	3000	100L	B3	Cast Iron	£225.00
WXJ0375	4	3000	112M	B3	Cast Iron	£282.00
WXJ0376	5.5	3000	132S	B3	Cast Iron	£347.40
WXJ0377	7.5	3000	132S	B3	Cast Iron	£388.20
WXJ0378	11	3000	160M	B3	Cast Iron	£675.00
WXJ0379	15	3000	160M	B3	Cast Iron	£775.20
WXJ0380	18.5	3000	160L	B3	Cast Iron	£927.00
WXJ0381	22	3000	180M	B3	Cast Iron	£1,144.80
WXJ0382	30	3000	200L	B3	Cast Iron	£1,271.01
WXJ0383	37	3000	200L	B3	Cast Iron	£1,351.99
WXJ0384	45	3000	225S/M	B3	Cast Iron	£2,165.59
WXJ0385	55	3000	250S/M	B3	Cast Iron	£2,561.35
WXJ0386	75	3000	280S/M	B3	Cast Iron	POA
WXJ0387	90	3000	280S/M	B3	Cast Iron	POA
WXJ0388	110	3000	315S/M	B3	Cast Iron	POA
WXJ0389	132	3000	315S/M	B3	Cast Iron	POA
WXJ0390	160	3000	315S/M	B3	Cast Iron	POA
WXJ0391	185	3000	315S/M	B3	Cast Iron	POA
WXJ0392	200	3000	315S/M	B3	Cast Iron	POA

‡ Special delivery applies. Please call for details

IE2 (EFF1) - AC Three Phase - 4 Pole 1500 rpm - Foot Mounted (B3) Cast Iron



Price Each

Order Code	kW	Nominal RPM	Frame	Mount	Material	1+
WXJ0393	0.12	1500	63	B3	Cast Iron	£70.75
WXJ0394	0.18	1500	63	B3	Cast Iron	£74.18
WXJ0395	0.25	1500	71	B3	Cast Iron	£91.80
WXJ0396	0.37	1500	71	B3	Cast Iron	£94.20
WXJ0397	0.55	1500	80	B3	Cast Iron	£116.40
WXJ0398	0.75	1500	80	B3	Cast Iron	£121.20
WXJ0399	1.1	1500	90S	B3	Cast Iron	£140.40
WXJ0400	1.5	1500	90L	B3	Cast Iron	£168.00
WXJ0401	2.2	1500	100L	B3	Cast Iron	£196.80
WXJ0402	3	1500	100L	B3	Cast Iron	£214.80
WXJ0403	4	1500	112M	B3	Cast Iron	£265.06
WXJ0404	5.5	1500	132S	B3	Cast Iron	£351.00
WXJ0405	7.5	1500	132M	B3	Cast Iron	£421.20
WXJ0406	11	1500	160M	B3	Cast Iron	£660.00
WXJ0407	15	1500	160L	B3	Cast Iron	£780.60
WXJ0408	18.5	1500	180M	B3	Cast Iron	£1,057.46
WXJ0409	22	1500	180L	B3	Cast Iron	£1,154.40
WXJ0410	30	1500	200L	B3	Cast Iron	£1,215.19
WXJ0411	37	1500	225S/M	B3	Cast Iron	£1,767.98
WXJ0412	45	1500	225S/M	B3	Cast Iron	£2,011.90
WXJ0413	55	1500	250S/M	B3	Cast Iron	£2,468.38
WXJ0414	75	1500	280S/M	B3	Cast Iron	POA
WXJ0415	90	1500	280S/M	B3	Cast Iron	POA
WXJ0416	110	1500	315S/M	B3	Cast Iron	POA
WXJ0417 ‡	132	1500	315S/M	B3	Cast Iron	POA
WXJ0418 ‡	160	1500	315S/M	B3	Cast Iron	POA
WXJ0419 ‡	185	1500	315S/M	B3	Cast Iron	POA
WXJ0420 ‡	200	1500	315S/M	B3	Cast Iron	POA

‡ Special delivery applies. Please call for details

IE2 (EFF1) - AC Three Phase - 6 Pole 1000 rpm - Foot Mounted (B3) Cast Iron



Price Each

Order Code	kW	Nominal RPM	Frame	Mount	Material	1+
WXJ0421	0.18	1000	71	B3	Cast Iron	£93.41
WXJ0422	0.25	1000	71	B3	Cast Iron	£106.46
WXJ0423	0.37	1000	80	B3	Cast Iron	£107.15
WXJ0424	0.55	1000	80	B3	Cast Iron	£110.59
WXJ0425	0.75	1000	90S	B3	Cast Iron	£126.38
WXJ0426	1.1	1000	90L	B3	Cast Iron	£151.80
WXJ0427	1.5	1000	100L	B3	Cast Iron	£222.60
WXJ0428	2.2	1000	112M	B3	Cast Iron	£278.40
WXJ0429	3	1000	132S	B3	Cast Iron	£314.59
WXJ0430	4	1000	132M	B3	Cast Iron	£355.12
WXJ0431	5.5	1000	132M	B3	Cast Iron	£442.80
WXJ0432	7.5	1000	160M	B3	Cast Iron	£663.00
WXJ0433	11	1000	160L	B3	Cast Iron	£804.60
WXJ0434 ‡	15	1000	180L	B3	Cast Iron	£1,053.67
WXJ0435 ‡	18.5	1000	200L	B3	Cast Iron	£1,456.78
WXJ0436 ‡	22	1000	200L	B3	Cast Iron	£1,360.02
WXJ0437 ‡	30	1000	225S/M	B3	Cast Iron	£2,409.58

‡ Special delivery applies. Please call for details

IE2 (EFF1 Premium Efficiency) - WEG Motors (B5) Cast Iron



3 year warranty on motor and drive packages



IE2 (EFF1) - AC Three Phase - 2 Pole 3000 rpm - Flanged Mounted (B5) Cast Iron



Price Each

Order Code	kW	Nominal RPM	Frame	Mount	Material	1+
WXJ0438	0.12	3000	63	B5	Cast Iron	£74.18
WXJ0439	0.18	3000	63	B5	Cast Iron	£76.93
WXJ0440	0.25	3000	63	B5	Cast Iron	£81.74
WXJ0441	0.37	3000	71	B5	Cast Iron	£86.54
WXJ0442	0.55	3000	71	B5	Cast Iron	£89.29
WXJ0443	0.75	3000	80	B5	Cast Iron	£115.40
WXJ0444	1.1	3000	80	B5	Cast Iron	£121.58
WXJ0445	1.5	3000	90S	B5	Cast Iron	£154.80
WXJ0446	2.2	3000	90L	B5	Cast Iron	£189.00
WXJ0447	3	3000	100L	B5	Cast Iron	£234.60
WXJ0448	4	3000	112M	B5	Cast Iron	£294.00
WXJ0449	5.5	3000	132S	B5	Cast Iron	£365.40
WXJ0450	7.5	3000	132S	B5	Cast Iron	£406.20
WXJ0451	11	3000	160M	B5	Cast Iron	£675.00
WXJ0452	15	3000	160M	B5	Cast Iron	£775.20
WXJ0453	18.5	3000	160L	B5	Cast Iron	£954.00
WXJ0454	22	3000	180M	B5	Cast Iron	£1,048.18
WXJ0455	30	3000	200L	B5	Cast Iron	£1,325.31
WXJ0456	37	3000	200L	B5	Cast Iron	£1,406.31
WXJ0457	45	3000	225S/M	B5	Cast Iron	£2,231.86
WXJ0458	55	3000	250S/M	B5	Cast Iron	£2,642.33
WXJ0459	75	3000	280S/M	B5	Cast Iron	POA
WXJ0460 ‡	90	3000	280S/M	B5	Cast Iron	POA
WXJ0461 ‡	110	3000	315S/M	B5	Cast Iron	POA
WXJ0462 ‡	132	3000	315S/M	B5	Cast Iron	POA
WXJ0463 ‡	160	3000	315S/M	B5	Cast Iron	POA
WXJ0464 ‡	185	3000	315S/M	B5	Cast Iron	POA
WXJ0465 ‡	200	3000	315S/M	B5	Cast Iron	POA

‡ Special delivery applies. Please call for details

IE2 (EFF1) - AC Three Phase - 4 Pole 1500 rpm - Flanged Mounted (B5) Cast Iron



Price Each

Order Code	kW	Nominal RPM	Frame	Mount	Material	1+
WXJ0466	0.12	1500	63	B5	Cast Iron	£74.18
WXJ0467	0.18	1500	63	B5	Cast Iron	£77.62
WXJ0468	0.25	1500	71	B5	Cast Iron	£85.18
WXJ0469	0.37	1500	71	B5	Cast Iron	£99.00
WXJ0470	0.55	1500	80	B5	Cast Iron	£107.84
WXJ0471	0.75	1500	80	B5	Cast Iron	£126.60
WXJ0472	1.1	1500	90S	B5	Cast Iron	£147.00
WXJ0473	1.5	1500	90L	B5	Cast Iron	£174.60
WXJ0474	2.2	1500	100L	B5	Cast Iron	£206.40
WXJ0475	3	1500	100L	B5	Cast Iron	£223.80
WXJ0476	4	1500	112M	B5	Cast Iron	£278.58
WXJ0477	5.5	1500	132S	B5	Cast Iron	£369.00
WXJ0478	7.5	1500	132M	B5	Cast Iron	£438.60
WXJ0479	11	1500	160M	B5	Cast Iron	£686.40
WXJ0480	15	1500	160L	B5	Cast Iron	£807.60
WXJ0481	18.5	1500	180M	B5	Cast Iron	£1,106.06
WXJ0482	22	1500	180L	B5	Cast Iron	£1,057.11
WXJ0483	30	1500	200L	B5	Cast Iron	£1,359.37
WXJ0484	37	1500	225S/M	B5	Cast Iron	£1,834.27
WXJ0485	45	1500	225S/M	B5	Cast Iron	£2,078.17
WXJ0486	55	1500	250S/M	B5	Cast Iron	£2,549.36
WXJ0487	75	1500	280S/M	B5	Cast Iron	POA
WXJ0488	90	1500	280S/M	B5	Cast Iron	POA
WXJ0489	110	1500	315S/M	B5	Cast Iron	POA
WXJ0490 ‡	132	1500	315S/M	B5	Cast Iron	POA
WXJ0491 ‡	160	1500	315S/M	B5	Cast Iron	POA
WXJ0492 ‡	185	1500	315S/M	B5	Cast Iron	POA
WXJ0493 ‡	200	1500	315S/M	B5	Cast Iron	POA

‡ Special delivery applies. Please call for details

IE2 (EFF1) - AC Three Phase - 6 Pole 1000 rpm - Flange Mounted (B5) Cast Iron



Price Each

Order Code	kW	Nominal RPM	Frame	Mount	Material	1+
WXJ0494	0.18	1000	71	B5	Cast Iron	£97.29
WXJ0495	0.25	1000	71	B5	Cast Iron	£98.77
WXJ0496	0.37	1000	80	B5	Cast Iron	£104.18
WXJ0497	0.55	1000	80	B5	Cast Iron	£107.18
WXJ0498	0.75	1000	90S	B5	Cast Iron	£135.68
WXJ0499	1.1	1000	90L	B5	Cast Iron	£143.39
WXJ0500	1.5	1000	100L	B5	Cast Iron	£193.59
WXJ0501	2.2	1000	112M	B5	Cast Iron	£243.10
WXJ0502	3	1000	132S	B5	Cast Iron	£347.90
WXJ0503	4	1000	132M	B5	Cast Iron	£391.70
WXJ0504	5.5	1000	132M	B5	Cast Iron	£460.86
WXJ0505	7.5	1000	160M	B5	Cast Iron	£666.78
WXJ0506	11	1000	160L	B5	Cast Iron	£868.67
WXJ0507 ‡	15	1000	180L	B5	Cast Iron	£1,036.80
WXJ0508 ‡	18.5	1000	200L	B5	Cast Iron	£1,425.25
WXJ0509 ‡	22	1000	200L	B5	Cast Iron	£1,510.52
WXJ0510 ‡	30	1000	225S/M	B5	Cast Iron	£2,299.48

‡ Special delivery applies. Please call for details

**IE2 (EFF1 Premium Efficiency) WEG Motors Aluminium**



- IE2 (EFF1) Motors meeting / exceeding New IEC 60034-30/ WIMES specifications
- Registered on the Energy Technology List
- Inverter ready for voltages <= 460V
- IP55 protection as standard (up to IP66 on request)
- Voltages 230V Delta / 400V Star (460V) +/-10%, 50(60)Hz for frame sizes <= 100
- 400V Delta (460V) / 690V Star +/-10%, 50(60)Hz for frame sizes 112 and above
- Material Aluminium
- Removeable and re-positionable feet (Multi-Mount)
- Top mounted terminal box as standard with metric cable entries
- Interchangeable with all IEC metric motors
- Class F insulation with class B temperature rise
- Epoxy paint finish as standard
- Robust construction featuring metal covers and stainless steel nameplates
- Excellent performance and reliability
- Reduced energy consumption / lower running costs

**IE2 (EFF1) - AC Three Phase 2 Pole 3000 rpm - Foot Mounted (B3) Aluminium**



Price Each

Order Code	kW	Nominal RPM	Frame	Mount	Material	1+
WXJ0793	0.12	3000	63	B3	Aluminium	£70.80
WXJ0794	0.18	3000	63	B3	Aluminium	£73.49
WXJ0795	0.25	3000	63	B3	Aluminium	£78.31
WXJ0805	0.37	3000	71	B3	Aluminium	£93.00
WXJ0806	0.55	3000	71	B3	Aluminium	£96.60
WXJ0813	0.75	3000	80	B3	Aluminium	£125.40
WXJ0814	1.1	3000	80	B3	Aluminium	£138.00
WXJ0821	1.5	3000	90S	B3	Aluminium	£148.20
WXJ0822	2.2	3000	90L	B3	Aluminium	£182.40
WXJ0777	3	3000	100L	B3	Aluminium	£225.00
WXJ0781	4	3000	112M	B3	Aluminium	£282.00
WXJ0785	5.5	3000	132S	B3	Aluminium	£347.40
WXJ0786	7.5	3000	132S	B3	Aluminium	£388.20

**IE2 (EFF1) - AC Three Phase 4 Pole 1500 rpm - Foot Mounted (B3) Aluminium**



Price Each

Order Code	kW	Nominal RPM	Frame	Mount	Material	1+
WXJ0796	0.12	1500	63	B3	Aluminium	£81.00
WXJ0797	0.18	1500	63	B3	Aluminium	£71.44
WXJ0798	0.25	1500	71	B3	Aluminium	£88.20
WXJ0807	0.37	1500	71	B3	Aluminium	£94.20
WXJ0808	0.55	1500	80	B3	Aluminium	£92.40
WXJ0815	0.75	1500	80	B3	Aluminium	£121.20
WXJ0816	1.1	1500	90S	B3	Aluminium	£109.80
WXJ0823	1.5	1500	90L	B3	Aluminium	£168.00
WXJ0824	2.2	1500	100L	B3	Aluminium	£160.80

Order Code	kW	Nominal RPM	Frame	Mount	Material	1+
WXJ0778	3	1500	100L	B3	Aluminium	£214.80
WXJ0782	4	1500	112M	B3	Aluminium	£265.06
WXJ0787	5.5	1500	132S	B3	Aluminium	£351.00
WXJ0788	7.5	1500	132S	B3	Aluminium	£421.20

**IE2 (EFF1) - AC Three Phase 2 pole 3000 rpm - Flange Mounted (B5) Aluminium**



Price Each

Order Code	kW	Nominal RPM	Frame	Mount	Material	1+
WXJ0799	0.12	3000	63	B5	Aluminium	£73.80
WXJ0800	0.18	3000	63	B5	Aluminium	£76.93
WXJ0801	0.25	3000	63	B5	Aluminium	£93.00
WXJ0809	0.37	3000	71	B5	Aluminium	£85.86
WXJ0810	0.55	3000	71	B5	Aluminium	£89.29
WXJ0817	0.75	3000	80	B5	Aluminium	£130.80
WXJ0818	1.1	3000	80	B5	Aluminium	£123.64
WXJ0825	1.5	3000	90S	B5	Aluminium	£154.80
WXJ0826	2.2	3000	90L	B5	Aluminium	£189.00
WXJ0779	3	3000	100L	B5	Aluminium	£234.60
WXJ0783	4	3000	112M	B5	Aluminium	£237.80
WXJ0789	5.5	3000	132S	B5	Aluminium	£365.40
WXJ0790	7.5	3000	132S	B5	Aluminium	£406.20

**IE2 (EFF1) - AC Three Phase 4 Pole 1500 rpm - Flange Mounted (B5) Aluminium**



Price Each

Order Code	kW	Nominal RPM	Frame	Mount	Material	1+
WXJ0802	0.12	1500	63	B5	Aluminium	£84.00
WXJ0803	0.18	1500	63	B5	Aluminium	£88.20
WXJ0804	0.25	1500	71	B5	Aluminium	£93.00
WXJ0811	0.37	1500	71	B5	Aluminium	£99.00
WXJ0812	0.55	1500	80	B5	Aluminium	£97.80
WXJ0819	0.75	1500	80	B5	Aluminium	£126.60
WXJ0820	1.1	1500	90S	B5	Aluminium	£116.40
WXJ0827	1.5	1500	90L	B5	Aluminium	£174.60
WXJ0828	2.2	1500	100L	B5	Aluminium	£169.80
WXJ0780	3	1500	100L	B5	Aluminium	£223.80
WXJ0784	4	1500	112M	B5	Aluminium	£278.58
WXJ0791	5.5	1500	132S	B5	Aluminium	£369.00
WXJ0792	7.5	1500	132S	B5	Aluminium	£438.60



- Reduced maintenance
- IP55 protection as standard
- Voltages 220/230/240V +/-10%, 50Hz
- Top mounted terminal box
- Metric cable entries
- Capacitors housed within motor terminal box for protection
- Class F insulation with class B temperature rise
- Robust construction featuring metal covers and stainless steel nameplates
- Excellent performance and reliability

AC Single Phase - 2 Pole 3000 rpm - Foot Mounted (B3)

						Price Each
Order Code	kW	Nominal RPM	Frame	Mount	Material	1+
WXJ0667	0.37	3000	71	B3	Cast Iron	£132.60
WXJ0668	0.55	3000	71	B3	Cast Iron	£136.10
WXJ0669	0.75	3000	80	B3	Cast Iron	£145.05
WXJ0670	1.1	3000	80	B3	Cast Iron	£154.00
WXJ0671	1.5	3000	90S	B3	Cast Iron	£203.99
WXJ0672	2.2	3000	90L	B3	Cast Iron	£239.51
WXJ0673	3	3000	100L	B3	Cast Iron	£273.94
WXJ0674	3.7	3000	112M	B3	Cast Iron	£319.87
WXJ0675	5.5	3000	132M	B3	Cast Iron	£369.57
WXJ0676	7.5	3000	132M	B3	Cast Iron	£408.28

AC Single Phase - 4 Pole 1500 rpm - Foot Mounted (B3)

						Price Each
Order Code	kW	Nominal RPM	Frame	Mount	Material	1+
WXJ0677	0.25	1500	71	B3	Cast Iron	£118.38
WXJ0678	0.37	1500	71	B3	Cast Iron	£139.78
WXJ0679	0.55	1500	80	B3	Cast Iron	£143.31
WXJ0680	0.75	1500	80	B3	Cast Iron	£157.01
WXJ0681	1.1	1500	90S	B3	Cast Iron	£198.45
WXJ0682	1.5	1500	90L	B3	Cast Iron	£247.29
WXJ0683	2.2	1500	100L	B3	Cast Iron	£263.53
WXJ0684	3	1500	112M	B3	Cast Iron	£319.87
WXJ0685	3.7	1500	112M	B3	Cast Iron	£369.57
WXJ0686	5.5	1500	132M	B3	Cast Iron	£433.07
WXJ0687	7.5	1500	132M	B3	Cast Iron	£477.25

‡ Special delivery applies. Please call for details



3 year warranty on motor and drive packages



AC Single Phase - 2 Pole 3000 rpm - Flange Mounted (B5)

						Price Each
Order Code	kW	Nominal RPM	Frame	Mount	Material	1+
WXJ0688	0.37	3000	71	B5	Cast Iron	£136.76
WXJ0689	0.55	3000	71	B5	Cast Iron	£140.28
WXJ0690	0.75	3000	80	B5	Cast Iron	£150.02
WXJ0691	1.1	3000	80	B5	Cast Iron	£158.96
WXJ0692	1.5	3000	90S	B5	Cast Iron	£210.41
WXJ0693	2.2	3000	90L	B5	Cast Iron	£245.92
WXJ0694	3	3000	100L	B5	Cast Iron	£283.76
WXJ0695	3.7	3000	112M	B5	Cast Iron	£332.31
WXJ0696	5.5	3000	132M	B5	Cast Iron	£388.64
WXJ0697	7.5	3000	132M	B5	Cast Iron	£427.36

AC Single Phase - 4 Pole 1500 rpm - Flange Mounted (B5)

						Price Each
Order Code	kW	Nominal RPM	Frame	Mount	Material	1+
WXJ0698	0.25	1500	71	B5	Cast Iron	£122.58
WXJ0699	0.37	1500	71	B5	Cast Iron	£143.97
WXJ0700	0.55	1500	80	B5	Cast Iron	£148.25
WXJ0701	0.75	1500	80	B5	Cast Iron	£157.01
WXJ0702	1.1	1500	90S	B5	Cast Iron	£204.88
WXJ0703	1.5	1500	90L	B5	Cast Iron	£253.70
WXJ0704	2.2	1500	100L	B5	Cast Iron	£273.36
WXJ0705	3	1500	112M	B5	Cast Iron	£332.31
WXJ0706	3.7	1500	112M	B5	Cast Iron	£382.02
WXJ0707	5.5	1500	132M	B5	Cast Iron	£452.15
WXJ0708	7.5	1500	132M	B5	Cast Iron	£496.13

‡ Special delivery applies. Please call for details

## ATEX - Hazardous Duty

### Flameproof EExd IIB T4 (ATEX) - WEG Motors (B3)



- ATEX compliant (meet Directive 94/9/EC)
- Certified Ex II 2 G EEx d IIB T4 for use in Zone 1 environments
- In accordance with European Standard EN50014 & 50018
- Efficiency levels meet / exceed CEMEP EFF2 specification
- Inverter ready for voltages <= 460V - certified T4 with derate
- IP55 protection as standard (up to IP66 on request)
- Voltages 230V Delta / 400V Star (460V) +/-10%, 50(60)Hz for frame sizes <= 100
- 400V Delta (460V) / 690V Star +/-10%, 50(60)Hz for frame sizes 112 and above
- Top mounted terminal box as standard with metric cable entries
- Class F insulation with class B temperature rise
- Thermistors and 110V anti-condensation heaters fitted as standard
- Epoxy paint finish as standard
- Robust construction featuring metal covers and stainless steel nameplates
- Excellent performance and reliability
- **Now available in EFF1 both EExd & EExnA**

### AC Three Phase - 2 Pole 3000 rpm - Foot Mounted (B3)

Order Code	kW	Nominal RPM	Frame	Mount	Material	Price Each	1+
WXJ0709	0.75	3000	90S	B3	Cast Iron	£302.68	
WXJ0710	1.1	3000	90S	B3	Cast Iron	£314.80	
WXJ0711	1.5	3000	90S	B3	Cast Iron	£327.40	
WXJ0712	2.2	3000	90L	B3	Cast Iron	£366.40	
WXJ0713	3	3000	100L	B3	Cast Iron	£458.14	
WXJ0714	4	3000	112M	B3	Cast Iron	£576.00	
WXJ0715	5.5	3000	132S	B3	Cast Iron	£736.20	
WXJ0716	7.5	3000	132S	B3	Cast Iron	£849.69	
WXJ0717	11	3000	160M	B3	Cast Iron	£991.79	
WXJ0718	15	3000	160M	B3	Cast Iron	£1176.81	
WXJ0719	18.5	3000	160L	B3	Cast Iron	£1303.70	
WXJ0720	22	3000	180M	B3	Cast Iron	£1566.02	
WXJ0721	30	3000	200L	B3	Cast Iron	£1890.14	
WXJ0722	37	3000	200L	B3	Cast Iron	£2316.91	
WXJ0723	45	3000	225S/M	B3	Cast Iron	£3624.84	
WXJ0724	55	3000	250S/M	B3	Cast Iron	POA	
WXJ0725	75	3000	280S/M	B3	Cast Iron	POA	

‡ Special delivery applies. Please call for details

### AC Three Phase - 4 Pole 1500 rpm - Foot Mounted (B3)

Order Code	kW	Nominal RPM	Frame	Mount	Material	Price Each	1+
WXJ0726	0.75	1500	90S	B3	Cast Iron	£306.41	
WXJ0727	1.1	1500	90S	B3	Cast Iron	£318.71	
WXJ0728	1.5	1500	90L	B3	Cast Iron	£355.51	
WXJ0729	2.2	1500	100L	B3	Cast Iron	£426.29	
WXJ0730	3	1500	100L	B3	Cast Iron	£510.21	
WXJ0731	4	1500	112M	B3	Cast Iron	£589.35	
WXJ0732	5.5	1500	132S	B3	Cast Iron	£721.91	
WXJ0733	7.5	1500	132M	B3	Cast Iron	£880.21	
WXJ0734	11	1500	160M	B3	Cast Iron	£992.75	
WXJ0735	15	1500	160L	B3	Cast Iron	£1101.47	
WXJ0736	18.5	1500	180M	B3	Cast Iron	£1336.29	
WXJ0737	22	1500	180L	B3	Cast Iron	£1478.89	
WXJ0738 ‡	30	1500	200L	B3	Cast Iron	£1867.90	
WXJ0739 ‡	37	1500	225S/M	B3	Cast Iron	£2378.51	
WXJ0740 ‡	45	1500	225S/M	B3	Cast Iron	£2752.26	
WXJ0741 ‡	55	1500	250S/M	B3	Cast Iron	POA	
WXJ0742 ‡	75	1500	280S/M	B3	Cast Iron	POA	

‡ Special delivery applies. Please call for details

### Flameproof EExd IIB T4 (ATEX) - WEG Motors (B5)

#### AC Three Phase - 2 Pole 3000 rpm - Flanged Mounted (B5)

Order Code	kW	Nominal RPM	Frame	Mount	Material	Price Each	1+
WXJ0743	0.75	3000	90S	B5	Cast Iron	£321.18	
WXJ0744	1.1	3000	90S	B5	Cast Iron	£333.30	
WXJ0745	1.5	3000	90S	B5	Cast Iron	£345.89	
WXJ0746	2.2	3000	90L	B5	Cast Iron	£384.90	
WXJ0747	3	3000	100L	B5	Cast Iron	£536.82	
WXJ0748	4	3000	112M	B5	Cast Iron	£606.51	
WXJ0749	5.5	3000	132S	B5	Cast Iron	£781.98	
WXJ0750	7.5	3000	132S	B5	Cast Iron	£895.47	
WXJ0751	11	3000	160M	B5	Cast Iron	£1049.00	
WXJ0752	15	3000	160M	B5	Cast Iron	£1234.02	
WXJ0753	18.5	3000	160L	B5	Cast Iron	£1356.52	
WXJ0754	22	3000	180M	B5	Cast Iron	£1630.29	
WXJ0755 ‡	30	3000	200L	B5	Cast Iron	£1914.22	
WXJ0756 ‡	37	3000	200L	B5	Cast Iron	£2351.16	
WXJ0757 ‡	45	3000	225S/M	B5	Cast Iron	£3718.75	
WXJ0758 ‡	55	3000	250S/M	B5	Cast Iron	POA	
WXJ0759 ‡	75	3000	280S/M	B5	Cast Iron	POA	

‡ Special delivery applies. Please call for details

#### AC Three Phase - 4 Pole 1500 rpm - Flanged Mounted (B5)

Order Code	kW	Nominal RPM	Frame	Mount	Material	Price Each	1+
WXJ0760	0.75	1500	90S	B5	Cast Iron	£324.91	
WXJ0761	1.1	1500	90S	B5	Cast Iron	£337.22	
WXJ0762	1.5	1500	90L	B5	Cast Iron	£374.01	
WXJ0763	2.2	1500	100L	B5	Cast Iron	£452.90	
WXJ0764	3	1500	100L	B5	Cast Iron	£536.82	
WXJ0765	4	1500	112M	B5	Cast Iron	£619.88	
WXJ0766	5.5	1500	132S	B5	Cast Iron	£767.69	
WXJ0767	7.5	1500	132M	B5	Cast Iron	£925.98	
WXJ0768	11	1500	160M	B5	Cast Iron	£1049.95	
WXJ0769	15	1500	160L	B5	Cast Iron	£1158.69	
WXJ0770	18.5	1500	180M	B5	Cast Iron	£1400.54	
WXJ0771	22	1500	180L	B5	Cast Iron	£1543.14	
WXJ0772 ‡	30	1500	200L	B5	Cast Iron	£1949.16	
WXJ0773 ‡	37	1500	225S/M	B5	Cast Iron	£2474.33	
WXJ0774 ‡	45	1500	225S/M	B5	Cast Iron	£2848.05	
WXJ0775 ‡	55	1500	250S/M	B5	Cast Iron	POA	
WXJ0776 ‡	75	1500	280S/M	B5	Cast Iron	POA	

‡ Special delivery applies. Please call for details



- BFK458 spring applied brakes
- The BFK series of spring applied brakes were designed by Lenze and is now manufactured by INTORQ. Torque is generated by multiple springs through a rotating brake disc (rotor) and released by applying DC voltage
- Sizes 10 – 14 are interchangeable with the previous model 14.448. Sizes 06 and 08 replace the previous 14.448 but parts are not interchangeable
- Robust & reliable
- Suits dynamic braking and static holding duties
- No running-in required
- Factory set air gap
- Brakes are supplied as a kit with stator (coil) assembly, brake disc (rotor), thin steel friction plate, hub and fixing screws. Rectifiers are needed for 230/400V supplies

Part code	Size	Rated torque Nm	Outside diameter mm	Length mm	Hub bore mm	Operating voltage
LENZE-BFK458-6-24-11	06	4	87	37	11	24
LENZE-BFK458-6-24-14	06	4	87	37	14	24
LENZE-BFK458-6-205-11	06	4	87	37	11	205
LENZE-BFK458-6-205-14	06	4	87	37	14	205
LENZE-BFK458-8-24-15	08	8	105	43	15	24
LENZE-BFK458-8-24-20	08	8	105	43	20	24
LENZE-BFK458-8-205-15	08	8	105	43	15	205
LENZE-BFK458-8-205-20	08	8	105	43	20	205
LENZE-BFK458-10-24-15	10	16	130	49	15	24
LENZE-BFK458-10-24-20	10	16	130	49	20	24
LENZE-BFK458-10-205-15	10	16	130	49	15	205
LENZE-BFK458-10-205-20	10	16	130	49	20	205
LENZE-BFK458-12-24-14	12	32	150	55	14 pilot	24
LENZE-BFK458-12-24-20	12	32	150	55	20	24
LENZE-BFK458-12-205-14	12	32	150	55	14 pilot	205
LENZE-BFK458-12-205-20	12	32	150	55	20	205
LENZE-BFK458-14-24-20	14	60	165	66	20	24
LENZE-BFK458-14-24-25	14	60	165	66	25	24
LENZE-BFK458-14-205-20	14	60	165	66	20	205
LENZE-BFK458-14-205-25	14	60	165	66	25	205

Rectifiers for 205V brakes

LENZE-HALFWAVE400V	Half wave for 400V supply (Vout = 0.45xVin)
LENZE-FULLWAVE230V	Full wave for 230V supply (Vout = 0.9xVin)

Replacement brake discs (rotors)

Suits brake size	Disc diameter	Base material
LENZE-BFK458-6-DICS-PL	60	Plastic *
LENZE-BFK458-6-DICS-AL	60	Al
LENZE-BFK458-8-DICS-AL	77	Al
LENZE-BFK458-10-DICS-AL	95	Al
LENZE-BFK458-12-DICS-AL	115	Al
LENZE-BFK458-14-DICS-AL	124	Al

- Unsuitable for hoist and lift duties
- Available on request - larger sizes, other voltages, manual release lever, seal, mounting flange

Price Each

Order Code	Part code	Size	Operating voltage	Price each 1+
WXJ0913	LENZE-BFK458-6-24-11	06	24	POA
WXJ0914	LENZE-BFK458-6-24-14	06	24	POA
WXJ0911	LENZE-BFK458-6-205-11	06	205	POA
WXJ0912	LENZE-BFK458-6-205-14	06	205	POA
WXJ0919	LENZE-BFK458-8-24-15	08	24	POA
WXJ0920	LENZE-BFK458-8-24-20	08	24	POA
WXJ0917	LENZE-BFK458-8-205-15	08	205	POA
WXJ0918	LENZE-BFK458-8-205-20	08	205	POA
WXJ0898	LENZE-BFK458-10-24-15	10	24	POA
WXJ0899	LENZE-BFK458-10-24-20	10	24	POA
WXJ0896	LENZE-BFK458-10-205-15	10	205	POA
WXJ0897	LENZE-BFK458-10-205-20	10	205	POA
WXJ0903	LENZE-BFK458-12-24-14	12	24	POA
WXJ0904	LENZE-BFK458-12-24-20	12	24	POA
WXJ0901	LENZE-BFK458-12-205-14	12	205	POA
WXJ0902	LENZE-BFK458-12-205-20	12	205	POA
WXJ0908	LENZE-BFK458-14-24-20	14	24	POA
WXJ0909	LENZE-BFK458-14-24-25	14	24	POA
WXJ0906	LENZE-BFK458-14-205-20	14	205	POA
WXJ0907	LENZE-BFK458-14-205-25	14	205	POA

Rectifiers for 205V brakes

WXJ0923	LENZE-HALFWAVE400V	POA
WXJ0922	LENZE-FULLWAVE230V	POA

Replacement brake discs (rotors)

Order Code	Part code	Size	Price each 1+
WXJ0916	LENZE-BFK458-6-DICS-PL	6	POA
WXJ0915	LENZE-BFK458-6-DICS-AL	6	POA
WXJ0921	LENZE-BFK458-8-DICS-AL	8	POA
WXJ0900	LENZE-BFK458-10-DICS-AL	10	POA
WXJ0905	LENZE-BFK458-12-DICS-AL	12	POA
WXJ0910	LENZE-BFK458-14-DICS-AL	14	POA

Motor Slide Bases



- Constructed in galvanised steel
- Easy to fit reduces downtime
- Constant alignment which helps reduce maintenance time
- Suitable for any motor type i.e. IEC, NEMA, B56
- Wide adjustment range achieved by using spanner/socket
- Adjustable without moving motor bolts

Price Each

Order Code	Part code	To Fit Motor (Frame Sizes)	Max Adjustment (varies by frame size)	Size in mm (in mm)	Price +1
WXJ0926	MB56/80	56, 63, 71, 80	98 / 88 / 76 / 63	240 x 154 x 22	£17.23
WXJ0927	MB71/90	71, 80, 90	118 / 105 / 90	293 x 180 x 25	£24.40
WXJ0928	MB80/112	80, 90, 100, 112	169 / 154 / 134 / 105	365 x 220 x 30	£29.59
WXJ0929	MB90/132	90, 100, 112, 132	208 / 188 / 158 / 132	430 x 250 x 35	£37.10
WXJ0924	MB160/180	160, 180	176 / 151	532 x 380 x 40	£77.07
WXJ0925	MB200/225	200, 225	182 / 144	635 x 448 x 50	£166.40



# THE ATEX Directive and what it means to you

## Introduction

Siemens has long been established as a major supplier of LV Motors for use in hazardous locations throughout the world.

In its endeavours to remain at the forefront of technological advances, Siemens was redeveloping its hazardous area motors to meet requirements of the new ATEX Directive 94/9/EC well before the mandatory date of the 1st July 2003.

Our range of EExde, EExe and EExnA and dust hazardous motors already complied with ATEX before that date.

## The ATEX Directive

The ATEX directive became mandatory from the 1st July 2003, which in practice meant the following:

- All equipment purchased before 01/07/03 but not commissioned until after 01/07/03 had to conform to the ATEX Directive (see Directive 1999/92/EC).
- Equipment purchased and commissioned before 01/07/03 did not need to conform to the ATEX Directive, provided it was a) certified to the relevant standard and appropriate for the environment, and b) was correctly installed and had undergone continued maintenance.

The ATEX Directive (ATEX means ATmospheres Explosible) is a European Directive 94/9/EC. It was mandatory from the 1st July 2003 and affects all manufacturers and users of mechanical or electrical equipment for use within hazardous atmospheres/areas.

### The European Directive 94/9/EC (ATEX)

- Serves to secure the free movement of goods within the European Member States
- Used to harmonize European standards
- Harmonizes minimum requirements for the protection of health and safety
- Classifies explosion protected motors into three safety categories
- CE marking

In addition to the ATEX Directive, there remains the Machinery Directive, Low Voltage Directive, and Electromagnetic Compatibility Directive, which complement each other.

Siemens also shows its compliance with these directives in the form of CE Marking.

Details of new markings to ATEX Directive are shown on the opposite page.

## New certification and approval

### Category 1 (Zones 0 and 20):

Low-voltage motors are not generally used.

### Category 2 (Zones 1 and 21):

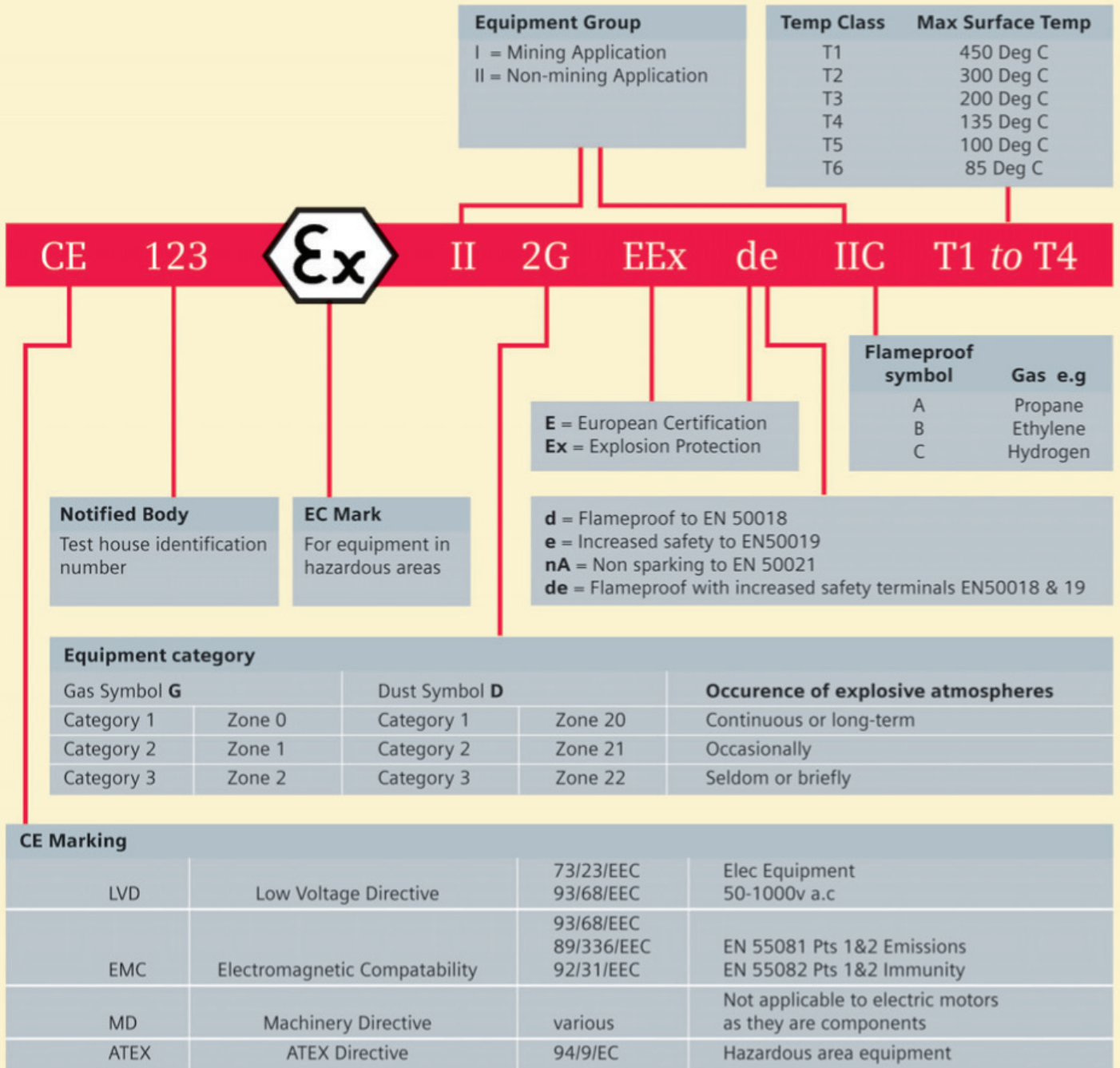
Directive 94/9/EC has been implemented in three steps:

1. The production facilities are specified by the nominated testing body – in the case of Siemens, this is DMT (Deutsche Montan Technologie/ Dortmund).
2. The EC-Type Examination Certificate is issued by the specified testing body (PTB).
3. The manufacturer issues, under his own responsibility, an EC-Declaration of Conformity and attaches his CE marking.

### Category 3 (Zones 2 and 22):

The manufacturer issues, under his own responsibility, an EC-Declaration of Conformity and attaches his CE marking.

# Hazardous area motor markings



The above markings are the most visible changes to the motors.

## Standards

In the case of gases and vapours, standards are unchanged, but for dust environments entirely new standards have been introduced. As you will note from the above, there are now three zones for dust: Zone 20, 21 and 22.

## Documentation

Siemens range of hazardous area motors are certified to the latest standards. Full documentation including notified testing body certificates, product certificates, conformity documentation, drawings, test certificates, data sheets and many more are available on request.

For further information and/or advice, please contact Siemens, or alternatively contact one of our approved distribution/motor partner centres.