



---

## Housed Bearings

## Plummer Blocks

### SNL Housed Units



- Easy installation
- Reinforced design
- High load carrying capacity
- Relubrication facility as standard
- Condition monitoring options
- Wide range of sealing solutions
- K7 special fit for fan applications

Product Code	Height Centre	Bolt Hole Centre
SNL 509	60	170
SNL 510-608	60	170
SNL 511-609	70	210
SNL 511-609 K7	70	210
SNL 512-610 K7	70	210
SNL 513-611	80	230
SNL 513-611 K7	80	230
SNL 515-612	80	230
SNL 515-612 K7	80	230
SNL 516-613	95	260
SNL 516-613 K7	95	260
SNL 517 K7	95	260
SNL 518-615	100	290
SNL 520-617	112	320
SNL 522-619	125	350
SNL 522-619 K7	125	350
SNL 524-620	140	350
SNL 524-620 K7	140	350
SNL 528	150	420

## RHP Self Lube®

### RHP Self Lube®



### RHP bearings

- Will accommodate radial and some axial loads in both directions
- One-piece high quality cast iron housings
- Spherical seating to allow for initial misalignment on mounting
- Bearing rings through hardened high quality steel
- Proven single lip seal
- Triple lip seal, flingers and protector caps also available
- Setscrew shaft locking
- Available with eccentric locking collar
- Temperature capability -20 to +110°C
- High/Low temperature versions available

## Metric Range

### NP



- Two bolt cast iron pillow block unit
- Normal duty

Product Code	Shaft Diameter	Bolt Centre (max)	Bolt Centre (min)	Height Centre
NP20	20	100.5	88.5	33.3
NP25	25	112.7	96.8	36.5
NP30	30	129.5	108.5	42.9
NP35	35	136.5	121.5	47.6
NP40	40	148	127	49.2
NP45	45	154.5	140.5	54
NP50	50	163	154	57.2

### MP



- Two bolt cast iron pillow block unit
- Heavier duty

Product Code	Shaft Diameter	Bolt Centre (max)	Bolt Centre (min)	Height Centre
MP25	25	127.5	108.5	44.45
MP30	30	136.5	121.5	47.60
MP35	35	160	135	53.98
MP40	40	172.5	145	58.72
MP45	45	172.5	145	58.72
MP50	50	178.5	162.5	63.50

**Need some Bearing Grease?  
See our Oils & Greases Section**



## SF



- Normal duty
- Four bolt cast iron square flange unit

Product Code	Shaft Diameter	Length (Square)	Bolt Centre
SF20	20	85.7	63.5
SF25	25	95.3	70
SF30	30	108	82.5
SF35	35	117.5	92
SF40	40	130.2	101.5
SF45	45	136.5	105
SF50	50	142.9	111

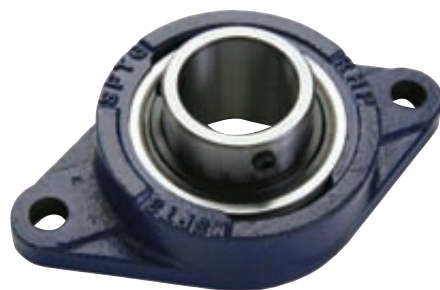
## MSF



- Heavier duty
- Four bolt hole cast iron square flange unit

Product Code	Shaft Diameter	Length (Square)	Bolt Centre
MSF25	25	108	82.5
MSF30	30	117.5	92
MSF35	35	130.2	101.5
MSF40	40	136.5	105
MSF45	45	142.9	111
MSF50	50	161.9	130

## SFT



- Normal duty
- Two bolt hole cast iron flange unit

Product Code	Shaft Diameter	Length	Width	Bolt Centre
SFT20	20	111.9	60.3	90
SFT25	25	125.5	70	99
SFT30	30	141.3	82.6	116.5
SFT35	35	155.5	95.5	130
SFT40	40	171.4	101.6	143.5
SFT45	45	179.4	111.1	148.5
SFT50	50	188.9	115.9	157



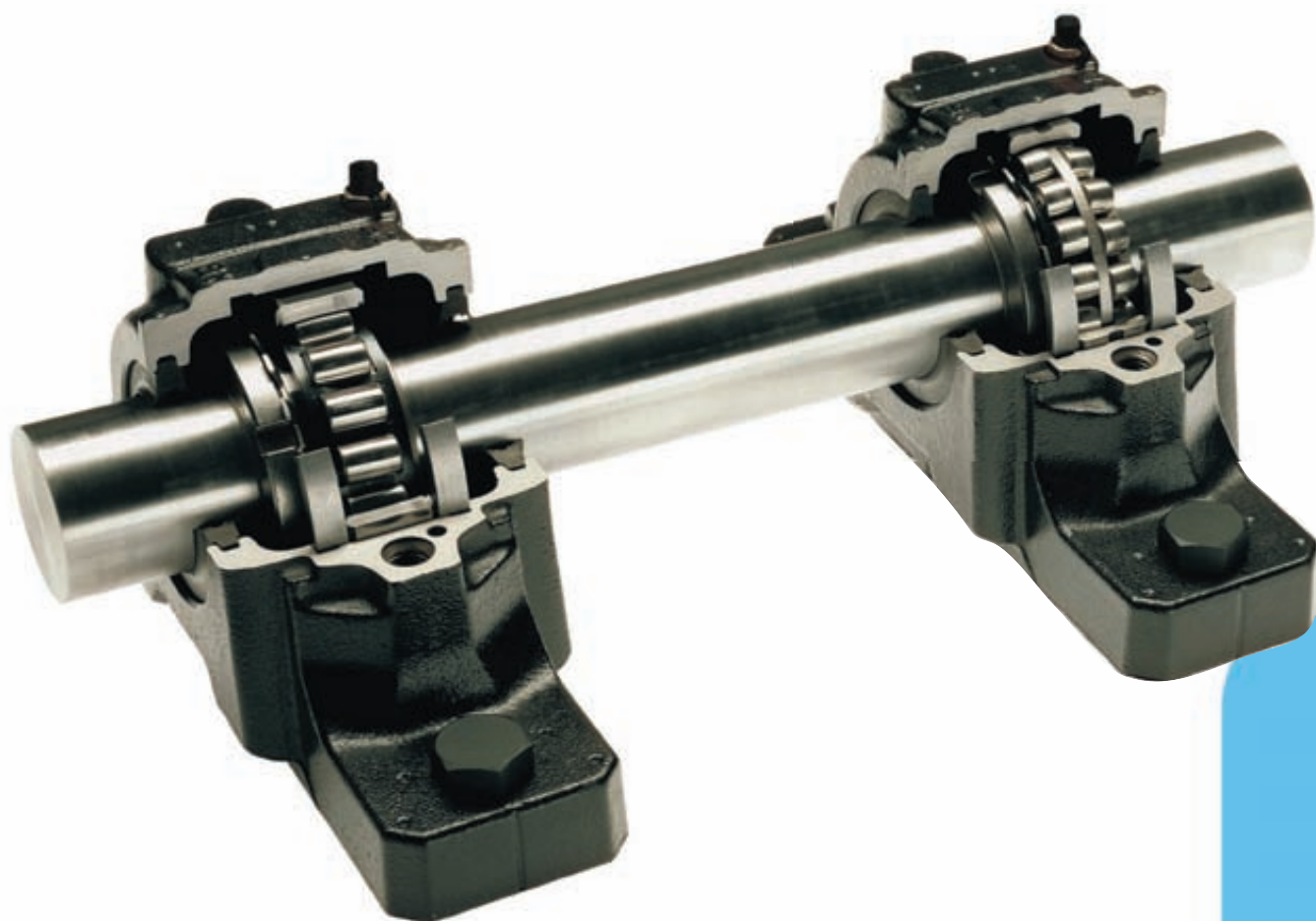
# Save money by reducing fan failures

## Total fan shaft solution

The total fan shaft solution can significantly reduce operating temperatures, enabling you to increase fan speed and output, without upgrading the lubrication system.

### Customer benefits:

- Greater machine output
- Reduced energy consumption
- Extended bearing service life
- Lower vibration and noise levels
- Extended maintenance intervals
- Lower operating temperature





# Refinery saves nearly £94,000 by reducing fan failures

A refinery was experiencing an unacceptable number of critical fan failures. Correcting these failures cost £6,144 each in parts and labour, plus the enormous cost of lost production.

After an initial assessment to study the causes of failure, BRAMMER recommended the SKF total fan shaft solution, which combined an upgraded bearing solution mounted in SNL plummer block housings.

## Summary of cost savings

Fan population	12
Reduction in fan failures	19

(Increased MTBF from 12 to 37 months)

### Cost of failures

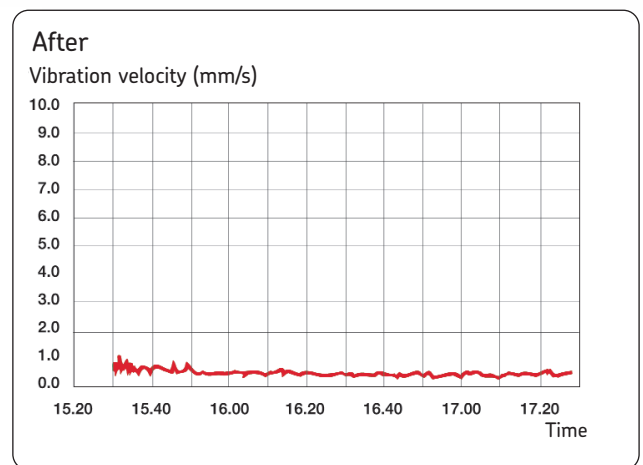
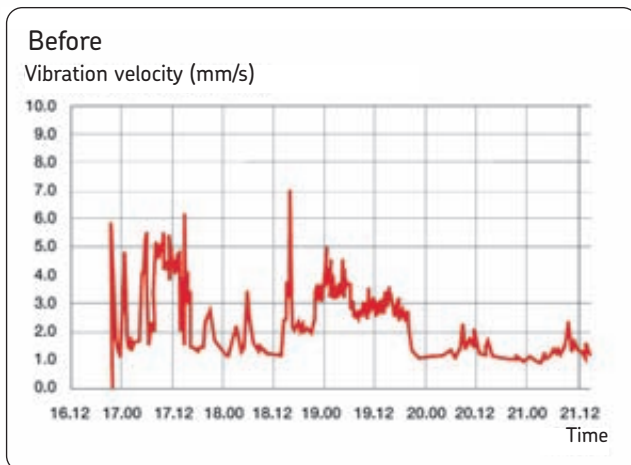
Components (£5,800 per fan x 19)	£110,200
Labour (4 staff x 4.3 hours x £20 hour x 19)	£6,536

### Total cost

SKF solution cost (bearings and housings)	£23,100
---	---------

## Total savings

**£93,636**



Vibration in the fans was significantly reduced with the SKF total fan shaft solution.

For further details please contact your local BRAMMER Sales and Service Centre.

**BRAMMER** 

**0870 240 2100**  
**www.brammer.biz**



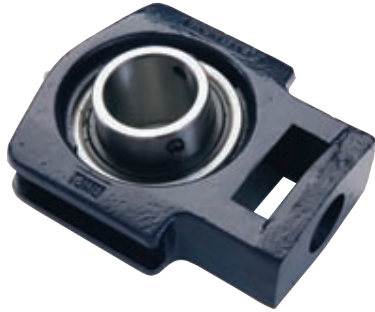
MFC



- Heavier duty
- Four bolt hole cast iron round flange

Product Code	Shaft Diameter	Diameter	Bolt Centre
MFC25	25	111.1	92.08
MFC30	30	127	104.78
MFC35	35	133.4	111.12
MFC40	40	133.4	111.12
MFC45	45	155.6	130.18
MFC50	50	161.9	136.52

ST



- Cast iron take-up unit
- Normal duty

Product Code	Shaft Diameter	Length	Width	Bolt Hole Diameter
ST25	25	98	88.5	22.5
ST30	30	115.5	101.5	22.5
ST35	35	124	101.5	22.5
ST40	40	143.5	118	29
ST45	45	147	118	29
ST50	50	151	118	29

MST



- Cast iron take-up unit
- Heavier duty

Product Code	Shaft Diameter	Length	Width	Bolt Hole Diameter
MST25	25	115.5	101.5	22.5
MST30	30	124	101.5	22.5
MST35	35	143.5	118	29
MST40	40	147	118	29
MST45	45	151	118	29
MST50	50	182	146	35

BT



- RHP Self Lube® - Conveyor belt tensioner units

Product Code	Shaft Diameter	Length	Width
BT25	25	264	78
BT30L	30	274	98
BT35	35	274	98

Inch Range

NP



- Two bolt hole pillow block
- Normal duty

Product Code	Shaft Diameter	Bolt Centre (max)	Bolt Centre (min)	Centre Height
NP1/2	.500	3.957	3.484	1.189
NP5/8	.625	3.957	3.484	1.189
NP3/4	.750	3.957	3.484	1.311
NP7/8	.875	4.437	3.811	1.437
NP1	1.000	4.437	3.811	1.437
NP1.1/8	1.125	5.098	4.272	1.689
NP1.1/4	1.250	5.374	4.783	1.874
NP1.3/8	1.375	5.374	4.783	1.874
NP1.1/2	1.500	5.827	5.000	1.937
NP1.3/4	1.750	6.083	5.531	2.126
NP1.7/8	1.875	6.417	6.063	2.252
NP2	2.000	7.028	6.398	2.500
NP2.1/8	2.125	7.028	6.398	2.500
NP2.1/4	2.250	7.913	6.929	2.752
NP2.3/8	2.375	7.913	6.929	2.752
NP2.1/2	2.500	8.071	6.929	2.752
NP2.3/4	2.750	8.976	8.110	3.126
NP3	3.000	8.976	8.110	3.126

**Improve the performance of your fans - Ring 0870 240 2100 for more information on the Brammer/SKF Fan Solution Programme**



MP



- Two bolt cast iron pillow block unit
- Heavier duty

Product Code	Shaft Diameter	Bolt Centre (max)	Bolt Centre (min)	Height Centre
MP1	1.000	5.020	4.272	1.750
MP1.1/4	1.250	5.374	4.783	1.874
MP1.3/8	1.375	6.300	5.315	2.125
MP1.1/2	1.500	6.791	5.709	2.312
MP1.3/4	1.750	6.791	5.709	2.312
MP2	2.000	7.028	6.398	2.500
MP2.1/2	2.500	8.839	7.461	2.750
MP2.3/4	2.750	8.110	8.110	3.500
MP3	3.000	8.976	8.976	3.500

SF



- Normal duty
- Four bolt cast iron square flange unit

Product Code	Shaft Diameter	Length (Square)	Bolt Centre
SF1/2	.500	3.000	2.126
SF5/8	.625	3.000	2.126
SF3/4	.750	3.374	2.500
SF7/8	.875	3.752	2.756
SF1	1.000	3.752	2.756
SF1.1/8	1.125	4.252	3.248
SF1.1/4	1.250	4.626	3.622
SF1.3/8	1.375	4.626	3.622
SF1.1/2	1.500	5.126	3.996
SF1.5/8	1.625	5.374	4.134
SF1.3/4	1.750	5.374	4.134
SF1.7/8	1.875	5.626	4.370
SF2	2.000	6.374	5.118
SF2.1/8	2.125	6.374	5.118
SF2.1/4	2.250	6.870	5.630
SF2.3/8	2.375	6.870	5.630
SF2.1/2	2.500	6.870	5.630
SF2.3/4	2.750	7.736	6.000
SF2.7/8	2.875	7.736	6.000
SF3	3.000	7.736	6.000

**MSF**



- Heavier duty
- Four bolt cast iron square flange unit

Product Code	Shaft Diameter	Length (Square)	Bolt Centre
MSF1	1.000	4.252	3.248
MSF1.1/4	1.250	4.626	3.622
MSF1.3/8	1.375	5.126	3.996
MSF1.1/2	1.500	5.374	4.134
MSF1.3/4	1.750	5.626	4.370
MSF2	2.000	6.374	5.118
MSF2.1/2	2.500	7.382	5.875
MSF2.3/4	2.750	7.736	6.000
MSF3	3.000	7.736	6.000

**SFT**



- Two bolt cast iron flange unit
- Normal duty

Product Code	Shaft Diameter	Length	Width	Bolt Centre
SFT1/2	.500	3.878	2.067	3.012
SFT5/8	.625	3.878	2.067	3.012
SFT3/4	.750	4.406	2.374	3.543
SFT7/8	.875	4.941	2.756	3.898
SFT1	1.000	4.941	2.756	3.898
SFT1.1/8	1.125	5.563	3.252	4.687
SFT1.1/4	1.250	6.122	3.760	5.118
SFT1.3/8	1.375	6.122	3.760	5.118
SFT1.1/2	1.500	6.748	4.000	5.650
SFT1.5/8	1.625	7.063	4.374	5.846
SFT1.3/4	1.750	7.063	4.374	5.846
SFT1.7/8	1.875	7.437	4.563	6.181
SFT2	2.000	8.500	5.000	7.244
SFT2.1/8	2.125	8.500	5.000	7.244
SFT2.1/4	2.250	9.252	5.437	7.953
SFT2.3/8	2.375	9.252	5.437	7.953

**MFC**



- Heavier duty
- Four bolt cast iron round flange unit

Product Code	Shaft Diameter	Diameter	Bolt Centre
MFC1	1.000	4.374	3.625
MFC1.1/4	1.250	5.000	4.125
MFC1.3/8	1.375	5.252	4.375
MFC1.1/2	1.500	5.252	4.375
MFC1.3/4	1.750	6.126	5.125
MFC2	2.000	6.374	5.375
MFC2.1/4	2.250	7.126	6.000
MFC2.1/2	2.500	7.626	6.500
MFC2.3/4	2.750	8.748	7.500
MFC3	3.000	8.748	7.500

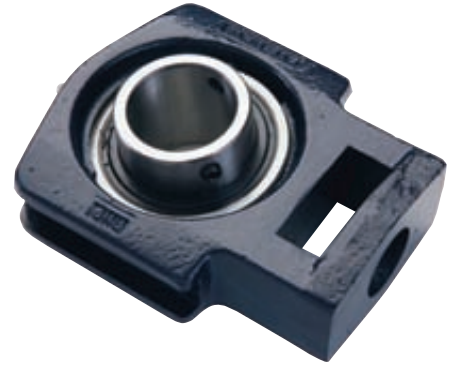
**ST**



- Normal duty
- Cast iron take-up unit

Product Code	Shaft Diameter	Length	Width	Bolt Hole Diameter
ST3/4	.750	3.760	3.484	.886
ST7/8	.875	3.858	3.484	.886
ST1	1.000	3.858	3.484	.886
ST1.1/8	1.125	4.547	3.996	.886
ST1.1/4	1.250	4.882	3.996	.886
ST1.3/8	1.375	4.882	3.996	.886
ST1.1/2	1.500	5.650	4.646	1.142
ST1.5/8	1.625	5.787	4.646	1.142
ST1.3/4	1.750	5.787	4.646	1.142
ST1.7/8	1.875	5.945	4.646	1.142
ST2	2.000	7.165	5.748	1.378
ST2.1/8	2.125	7.165	5.748	1.378
ST2.1/4	2.250	7.559	5.748	1.378
ST2.3/8	2.375	7.559	5.748	1.378
ST2.1/2	2.500	8.760	6.555	1.654
ST2.3/4	2.750	8.760	6.555	1.654
ST2.7/8	2.875	8.760	6.555	1.654
ST3	3.000	9.114	7.244	1.654

**MST**



- Cast iron take-up unit
- Heavier duty

Product Code	Shaft Diameter	Length	Width	Bolt Hole Diameter
MST1	1.000	4.547	3.996	.886
MST1.3/8	1.375	5.650	4.646	1.142
MST1.1/2	1.500	5.787	4.646	1.142
MST1.3/4	1.750	5.945	4.646	1.142

**BT**



- RHP Self Lube® - Conveyor belt tensioner units

Product Code	Shaft Diameter	Length	Width
BT7/8	.875	10.394	3.071
BT1	1.000	10.394	3.071
BT1-1/4	1.250	10.787	3.858
BT1-3/8	1.375	10.787	3.858

**Protector Caps**



- Protect machine operators from dangers of rotating shaft ends
- Provides additional protection to the bearings from contamination
- Made from mild steel coated with enamel for an attractive durable appearance
- Fits easily & securely to all standard cast Self Lube®

**We can supply the entire range. If you can't see it here, just call 0870 240 2100**

## RHP Silver Lube®

RHP Silver Lube®



### RHP bearings

- Will accommodate radial & some axial loads in both directions
- Thermoplastic resin housing resistant to detergents & a wide range of chemicals
- Spherical seating to allow for initial misalignment on mounting
- Stainless steel bearing inserts, bolt hole liners, setscrews, flinger & seal core
- Effective sealing with flinger & rubber sealing
- Set screw shaft locking
- Bearing insert charged with food grade grease
- Operating temperature range -20 to +90 °C
- Dimensionally interchangeable with the traditional RHP Self Lube®
- Some non-critical dimensions differ, see tables below

#### PNP



- Thermoplastic resin pillow block

Product Code	Shaft Diameter	Bolt Centre (max)	Bolt Centre (min)	Height Centre
PNP20CR	20	100.5	88.5	33.3
PNP25CR	25	112.7	96.8	36.5
PNP30CR	30	129.5	108.5	42.9
PNP35CR	35	136.5	121.5	47.6
PNP40CR	40	148	127	49.2

#### PSF



- Thermoplastic resin 4 bolt hole square flange

Product Code	Shaft Diameter	Length (Square)	Bolt Centre
PSF20CR	20	86.5	63.5
PSF25CR	25	95	70
PSF30CR	30	107.5	83
PSF35CR	35	117.5	92
PSF40CR	40	130.5	102

#### PSFT



- Thermoplastic resin 2 bolt hole flange unit

Product Code	Shaft Diameter	Length	Width	Bolt Centre
PSFT20CR	20	113.3	64.1	90
PSFT25CR	25	130.3	68.4	99
PSFT30CR	30	148.3	80.1	117
PSFT35CR	35	163.3	90.1	130
PSFT40CR	40	175.3	100.1	144

#### PST



- Thermoplastic resin take-up unit

Product Code	Shaft Diameter	Length	Width	Bolt Hole Thread
PST20CR	20	99	88	M16x2.00
PST25CR	25	99	88	M16x2.00
PST30CR	30	125	102	M16x2.00
PST35CR	35	125	102	M16x2.00
PST40CR	40	140	114	M16x2.00

#### Protector Caps



- Protect machine operators from dangers of rotating shaft ends
- Provides additional protection to the bearings from contamination
- Made from Polypropylene
- Fits easily & securely to all standard Silver-Lube® housings

**Need advice? FREE technical support at every Brammer branch**

## INA Housed Bearings

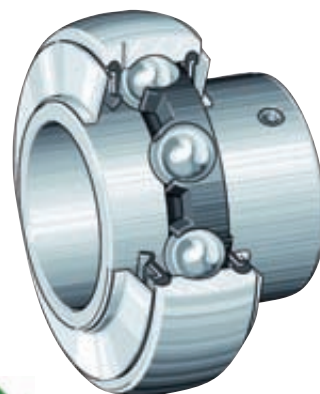
### Round Flanged Housed Bearings



- Ready to fit unit
- Shaft secured by grub screw locking
- Bearing packed with grease according to DIN 51 825 K3K-30
- Inserts mounted in a spherical seating
- Can accommodate static angular misalignment of +/- 5°
- Suitable for operating temperatures of -20 to +120°C

Product Code	To Suit Shaft Diameter	Overall Diameter	Depth
RMEY20	20	100	31
RMEY25	25	115	34.1
RMEY30	30	125	38.1
RMEY35	35	135	42.9
RMEY40	40	145	39.5
RMEY45	45	155	49.2
RMEY50	50	165	51.6
RMEY55	55	185	55.6
RMEY60	60	195	65.1
RMEY65	65	215	66.1
RMEY70	70	215	74.6
RMEY75	75	220	77.8
RMEY80	80	220	82.6
RMEY90	90	265	96

### INA Radial Insert Bearings



- Ready to fit unit
- Shaft secured by grub screw locking
- Grease-packed with grease according to DIN 51 825 K3K-30
- Inserts mounted in a spherical seating, therefore can accommodate static angular misalignment of +/- 5°
- Suitable for drawn shafts up to tolerance h9
- Suitable for operating temperatures of -20 to +120°C
- May be relubricated through the two grease holes in outer ring
- Long relubrication intervals due to the larger grease reservoirs compared to those of ball bearings
- In combination with INA cast iron or pressed steel housings produce a robust and economical bearing arrangement
- Other designs include: Eccentric locking collar, Flat back, High temperature versions & Corrosion-resistant versions

Product Code	Internal Diameter	External Diameter	Width
GYE12-KRR-B	12	40	27.4
GYE15-KRR-B	15	40	27.4
GYE16-KRR-B	16	40	27.4
GYE17-KRR-B	17	40	27.4
GYE20-KRR-B	20	47	37.4
GYE25-KRR-B	25	52	42.5
GYE30-KRR-B	30	62	38.1
GYE35-KRR-B	35	72	42.9
GYE40-KRR-B	40	80	49.2
GYE45-KRR-B	45	85	49.2
GYE50-KRR-B	50	90	51.6
GYE55-KRR-B	55	100	55.6
GYE60-KRR-B	60	110	65.1
GYE65-KRR-B	65	125	74.6
GYE70-KRR-B	70	125	74.6
GYE75-KRR-B	75	130	77.8
GYE80-KRR-B	80	140	82.6
GYE90-KRR-B	90	160	96

## SKF ConCentra

### ConCentra Housed Units



- Higher shaft speeds
- Lower lubrication consumption
- Extended maintenance intervals
- Reduced energy consumption

Product Code	Shaft Diameter	Base To Centre	Bolt Hole Centre
SYNT 40F	40	60	170
SYNT 45F	45	60	170
SYNT 50F	50	70	210
SYNT 55F	55	50	210
SYNT 60F	60	80	230
SYNT 65F	65	80	230
SYNT 40L	40	60	170
SYNT 45L	45	60	170
SYNT 50L	50	70	210
SYNT 55L	55	50	210
SYNT 60L	60	80	230
SYNT 65L	65	80	230

**We provide the latest specification products delivered factory sealed in perfect condition**



## ConCentra Ball Bearing Units



- Ready to mount and ready to operate
- High load carrying capacity
- High speed capability
- Low noise and vibration
- Simplified mounting

Product Code	Shaft Diameter	Base To Centre	Bolt Hole Centre
SY25PF	25	36.5	102
SY30PF	30	42.9	117.5
SY35PF	35	47.6	126
SY40PF	40	49.2	135.5
SY45PF	45	54	143.5
SY50PF	50	57.2	157
SY55PF	55	63.5	171.5
SY60PF	60	69.9	190.5

## Timken Type E Housed Bearing Units



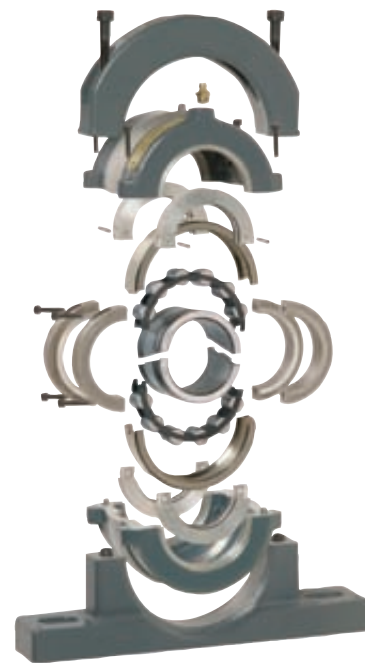
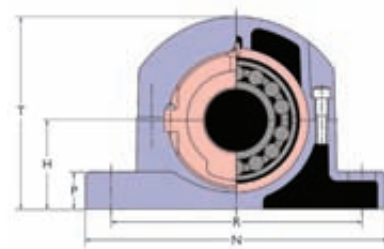
- Enhanced Taper Roller Bearing resulting in 55% increase in life and 14% load capacity increase
- Up to three times greater misalignment capability
- Optimised bearing profiles and improved surface textures improve lubrication performance
- E-coating provides better corrosion resistance than black oxide and powder coating
- Specially designed collar and nylon patch set screw for maximum locking power
- Double lip seals optimise lip contact to improve grease retention and reduce contaminant ingress
- Rotating collar acts as an initial flinger
- Bolt hole and shaft centreline dimensions interchangeable with industry practice

**Available in 2 & 4 bolt pillow block, flange & take up units**

Unit Configuration	Inch Range	Metric Range
Pillow Block: 2-Bolt Base	1-3/16 thru 3 -1/12	35 thru 90
Pillow Block: 4-Bolt Base	2-1/4 thru 5	60 thru 125
Flange: 4-Bolt	1-3/16 thru 4-1/2	35 thru 115
Flange: Piloted	1-3/16 thru 5	35 thru 125
Take Up: Wide Slot	1-3/8 thru 3	35 thru 75
Take Up: Top Angle	1-3/4 thru 4	45 thru 100

## Cooper Bearings

### Cooper Split Roller Bearings



- The part codes below are for complete units
- Each component part can be ordered separately if required as per tables below
- Longer life - up to 240% based on radial net load
- Higher load rating - increased capacity up to 30%
- Easy clip-lock cage for speedy assembly and maintenance
- Dimensionally interchangeable with Cooper O1 Series
- Installed without moving adjacent equipment or machinery
- Higher safety margins

**Available in many different mounting options including flange, hanger, take up and rod end mountings. Pedestal type shown above.**

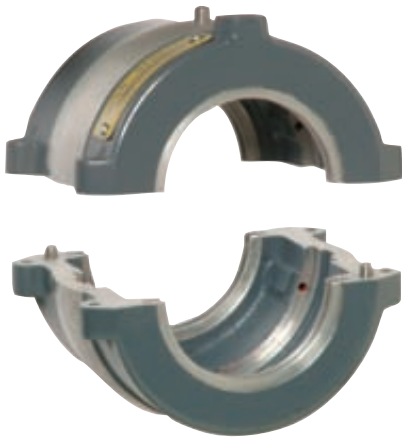
Product Codes	H	R	N	P	T	Bolts
01E BCP45MMEX	70	R-204(MIN)226(MAX)	270	25	158	2x M16
01E BCP45MMGR	70	R-204(MIN)226(MAX)	270	25	158	2x M16
01E BCP50MMEX	70	R-204(MIN)226(MAX)	270	25	158	2x M16
01E BCP50MMGR	70	R-204(MIN)226(MAX)	270	25	158	2x M16
01E BCP60MMEX	80	R-226(MIN)242(MAX)	280	32	180	2x M16
01E BCP60MMGR	80	R-226(MIN)242(MAX)	280	32	180	2x M16
01E BCP65MMEX	80	R-226(MIN)242(MAX)	280	32	180	2x M16
01E BCP65MMGR	80	R-226(MIN)242(MAX)	280	32	180	2x M16
01E BCP70MMEX	95	R-260(MIN)280(MAX)	330	38	208	2x M20
01E BCP70MMGR	95	R-260(MIN)280(MAX)	330	38	208	2x M20
01E BCP75MMEX	95	R-260(MIN)280(MAX)	330	38	208	2x M20
01E BCP75MMGR	95	R-260(MIN)280(MAX)	330	38	208	2x M20
01E BCP80MMEX	112	R-312(MIN)328(MAX)	380	44	252	2x M24
01E BCP80MMGR	112	R-312(MIN)328(MAX)	380	44	252	2x M24
01E BCP85MMEX	112	R-312(MIN)328(MAX)	380	44	252	2x M24
01E BCP85MMGR	112	R-312(MIN)328(MAX)	380	44	252	2x M24
01E BCP90MMEX	112	R-312(MIN)328(MAX)	380	44	252	2x M24
01E BCP90MMGR	112	R-312(MIN)328(MAX)	380	44	252	2x M24
01E BCP100MMEX	125	R-342(MIN)366(MAX)	420	52	272	2x M24
01E BCP100MMGR	125	R-342(MIN)366(MAX)	420	52	272	2x M24
01E BCP105MMEX	125	R-342(MIN)366(MAX)	420	52	272	2x M24
01E BCP105MMGR	125	R-342(MIN)366(MAX)	420	52	272	2x M24

**Metric Range Bearing Only**



- Can be purchased separately
- EX suffix denotes expansion type
- GR suffix denotes fixed type

**Cooper Split Cartridge**



**Metric Range Cartridge Only**



- Longer life - up to 240% based on radial net load
- Higher load rating - increased capacity up to 30%
- Easy clip-lock cage for speedy assembly and maintenance
- Dimensionally interchangeable with Cooper O1 Series
- Installed without moving adjacent equipment or machinery
- Higher safety margins
- Can be purchased separately

**Imperial Range Cartridge Only**



- Longer life - up to 240% based on radial net load
- Higher load rating - increased capacity up to 30%
- Easy clip-lock cage for speedy assembly and maintenance
- Dimensionally interchangeable with Cooper O1 Series
- Installed without moving adjacent equipment or machinery
- Higher safety margins
- Can be purchased separately

**Cooper Pedestal**



Product Code	Centre Height	Total Height	Length
P01	60	138	228
P02	70	158	270
P03	80	180	280
P04	95	208	330
P05	112	252	380
P06	125	272	420
P07	143	314	466

**Cooper ATL Seals**



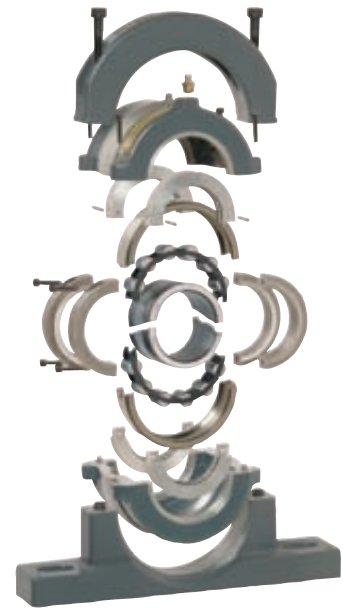
- Aluminium triple labyrinth
- Temperature range -20 to +100°C
- Superior sealing remain concentric to the shaft at all times
- Provides optimum bearing performance by retaining lubrication
- Suitable for high speed and general applications

**Cooper SRS Seals**



- Synthetic nitrile rubber single lip
- Temperature range -20 to +100°C
- Superior sealing remain concentric to the shaft at all times
- Provides optimum bearing performance by retaining lubrication
- For use in wet but not submerged conditions
- High and low temperature version available
- SRS seal with retaining plate suitable for submerged conditions up to 30mtrs

**Cooper SNC Range**



- Quick access and ease of change within the SN envelope
- Cost benefits using Cooper split bearings compared to solid options
- Housings bolt hole centres and base to bearing centreline conform to ISO 113-2
- Suitable for replacing solid and self aligning ball bearings using adaptor sleeves
- Shaft sizes 60mm (SN513) to 140mm (SN532)

Product Code	Shaft Size
SNC513	60mm
SNC515	65mm
SNC516	70mm
SNC517	75mm
SNC518	80mm
SNC519	85mm
SNC520	90mm
SNC522	100mm
SNC524	110mm
SNC526	115mm
SNC528	125mm
SNC530	135mm
SNC532	140mm

**Improve the performance of your fans - Ring 0870 240 2100 for more information on the Brammer/SKF Fan Solution Programme**





Split features provide maintenance and downtime savings

Superior sealing gives longer life in the harshest environments

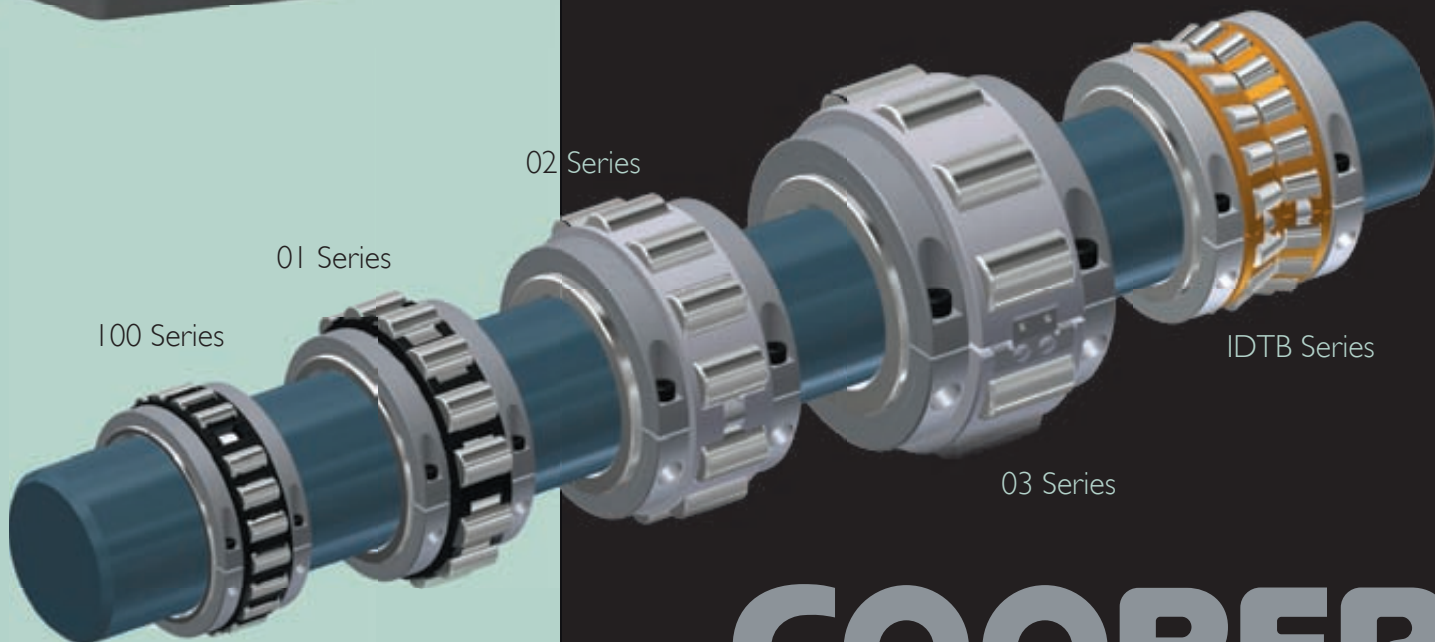
Now also 100 series for high speed shafts and IDTB series to cope with thrust - especially suitable for marine applications



FM 30609



EMS 541332



01 Series

02 Series

100 Series

IDTB Series

03 Series

**COOPER**

SPLIT ROLLER BEARINGS

[www.cooperbearings.com](http://www.cooperbearings.com)